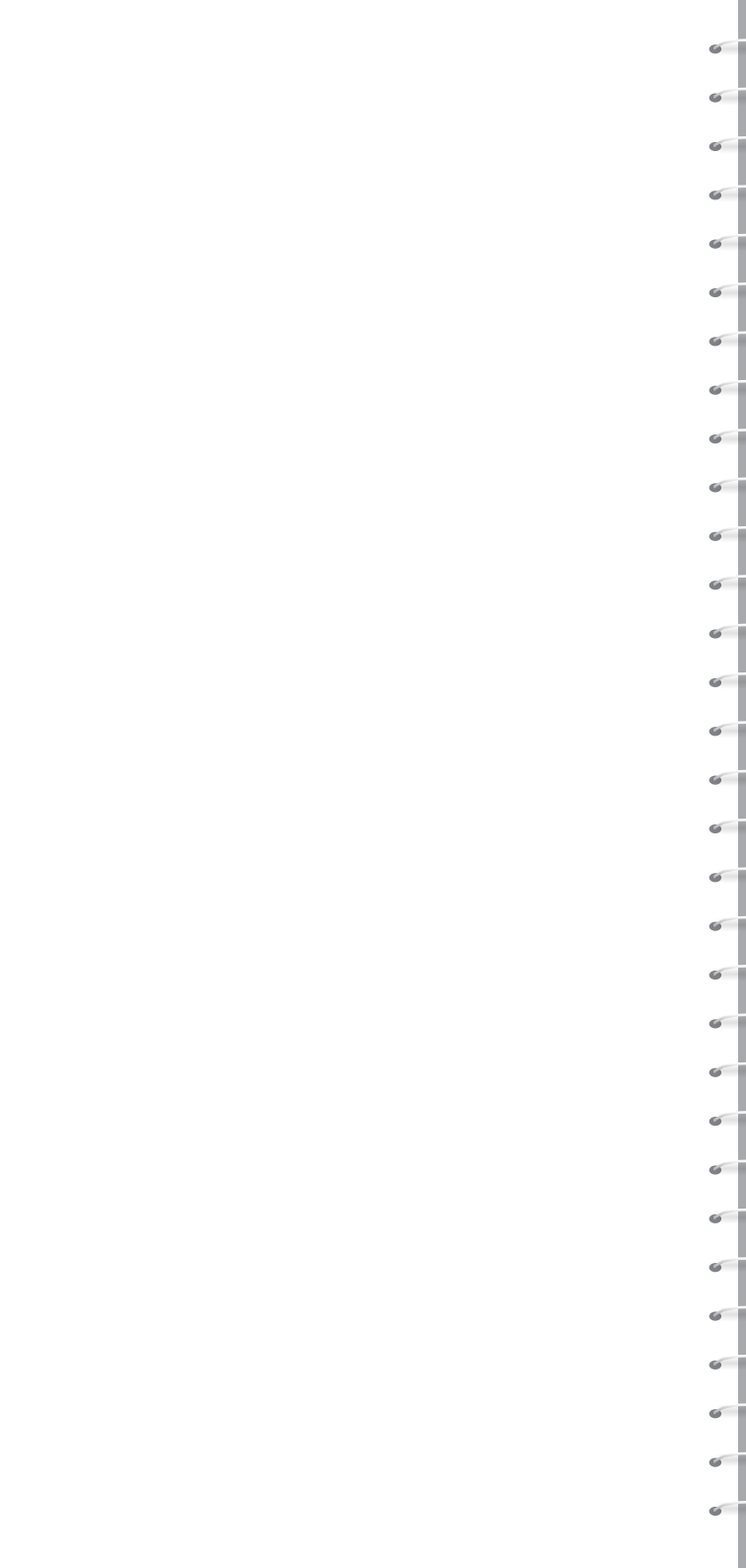


Marine Product Guide



Engines and Generator Sets



Marine Product Guide

Engines and Generator Sets

Contents

Introduction	2	
Rating Definitions	4	
Fuel Consumption Method	6	
Engine Model Name Explanation	6	
Product Listing	7	
Propulsion Specifications	15	
Diesel-Electric Propulsion Specifications	51	
Auxiliary Generator Specifications	63	
Generator Set Specifications	87	
Gas-Electric Propulsion Specifications	95	
International Offices	101	

Mitsubishi Marine Power

Mitsubishi Heavy Industries (MHI) boasts a long tradition in manufacturing engines, tracing back to the production of Japan's first unit for commercial use in 1917 and spanning both diesel and gasoline types in two – and four – stroke configurations. MHI continues to supply engines for a multitude of applications, from industrial and marine to off-highway and agricultural uses, and in line-ups ranging from as small as 0.3 kW to gigantic 66,000 kW. As a result, MHI now ranks as one of the world's leading engine manufacturers.

To date MHI has supplied more than 120,000 marine diesel engines for both main propulsion and auxiliary applications in ships and boats. They are preferred especially in applications demanding dependable, continuous operation combined with outstanding durability, excellent fuel efficiency and minimal requirements with respect to lubricants and spare parts. This way, MHI marine engines offer the dual advantages of ease of operation and optimum ease of maintenance.

The company's impressive record of engine deliveries is proof of MHI's close and unbroken relationship with marine industries.

Marine Engines Made in Japan

All MHI marine diesel engines are manufactured to the highest standards, applying state-of-the-art production facilities combined with experienced workmanship. Production is carried out exclusively at the Sagami Works in Japan, a facility conforming to strict ISO-9001 international quality standards as certified by DNV (Det Norske Veritas, Norway).

MHI marine engines have been purpose-designed for marine use. The base of the engine was designed based on marine vessels and tanks used in Unrestricted Continuous Duty circumstances.

According to our customers, the engines perform excellent in terms of reliability, durability, fuel consumption, long overhaul and easy maintenance.

Emission Regulations

MHI has long been engaged in the production of four-stroke cycle diesels, and already its conventional models incorporate a number of important breakthroughs. Next to that, MHI makes significant investments in the Environment-friendly engines development.

A summary of major regulations which Mitsubishi Heavy Industries adheres to is listed on the next page.

Regulations summary

IMO - Annex VI of MARPOL 73/78 which International Maritime Organization (IMO) has issued, entered into force on 19 May 2005. It applies retroactively to new engines greater than 130 kW and installed on vessels constructed from 1 January 2000 or to those which will undergo a major conversion after that date. The regulation also applies to fixed and floating rigs and to drilling platforms.

EU (Includes CCNR) - The emission limitations are valid for propulsion and auxiliary engines of inland vessels in EU inland waterways (Non-Road Directive 97/68/EC, amended 2010/26/EU). Alternatively, the limitations set by the Central Commission for Navigation on the Rhine (CCNR) may be applied (mutual agreement was reached on 1 July 2007).

The following classifications will appear on subsequent pages to identify the regulation with which the engine will be certified or complaint once placed on the market:

IMO T1 – IMO Tier I compliant; Engine International Air Pollution Prevention (EIAPP) certificates available. IMO-T1 is available for replacement only.

IMO T2 – IMO Tier II compliant; Engine International Air Pollution Prevention (EIAPP) certificates available.

IMO T3 – For IMO Tier III solutions, please contact Mitsubishi Turbocharger and Engine Europe B.V.

EU-3A – EU NRMM for Inland Waterways Stage 3A certified.

EU-4A – For EU stage 4 solutions, please contact Mitsubishi Turbocharger and Engine Europe B.V.

CCNR-2 – CCNR Stage 2 certified.

Classification Approvals

Mitsubishi engines are delivered tested and ready for installation on board. They are type approved by the major classification societies and can be delivered with certification by:

- American Bureau of Shipping (ABS)
- Bureau Vertias (BV)
- China Classification Society (CCS)
- DNV-GL
- Korean Register of Shipping (KR)
- Lloyd's Register (LR)
- Nippon Kaiji Kyokai (NK)
- Registro Italiano Navale (RINA)
- Russian Maritime Register of Shipping (RS)
- Russian River Register (RRR)
- Türk Loydu (TL)

For more information on marine classification society certification, please contact your local distributor or Mitsubishi Turbocharger and Engine Europe B.V.

Propulsion

Unrestricted Continuous Duty (UCD)

Typical Operation:

- Allowable Load Factor is less than 100% of Rated Power.
- Allowable Cruising Speed is less than 100% of Rated Speed.
- Operating hours are unlimited per year.

Typical Vessel Application:

- Cargo Vessels and Fishing Boats.

Heavy Duty (HD)

Typical Operation:

- Allowable Load Factor is up to 83% of Rated Power.
- Allowable Cruising Speed is up to 94% of Rated Speed.
- 100% of Rated Power is available intermittently for 8 h per every 24 h operation.
- Operating hours are less than 6,000 h per year.

Typical Vessel Application:

Working Boats, Passenger Vessels and Ferry Boats.

Medium Duty (MD)

Typical Operation:

- Allowable Load Factor is up to 75% of Rated Power.
- Allowable Cruising Speed is up to 91% of Rated Speed.
- 100% of Rated Power is available intermittently for 1 h per every 6 h operation.
- Operating hours are less than 3,000 h per year.

Typical Vessel Application:

- Pleasure Boats, High Performance Vessels and Patrol Boats.

Harbour Tugboat (HT)

Typical Operation:

- 100% of Rated Power is available intermittently for 8 h per every 24 h operation.
- Operating hours are less than 6,000 h per year.
- Average Load Factor is 60 - 80% of Rated Power.

Typical Vessel Application:

- Harbour Tugboats.

Diesel-Electric Propulsion

Typical Operation:

- Average Load Factor is 60 - 80% of Rated Power.
- Operating hours are 3,000 - 6,000 h per year.
- Momentary overload: 110% is available for max. 25 h per year on emergency basis.
- 100% of Rated Power is available for max. 3 h per every 12 h operation.

Typical Vessel Application:

- Offshore Vessels, Inland Cargo Vessels and Ferries.

Diesel-Electric Propulsion for SU engines:

Continuous Operation:

- Allowable Load Factor is less than 100% of Rated Power.
- Operating hours are unlimited per year.
- Overload: 110% is available for max. 25 h per year on emergency basis.

Typical Vessel Application:

- Ocean/Sea going Cargo Vessels and Tugboats.

Intermittent Operation:

- Average Load Factor is 60 - 80% of Rated Power.
- 100% of Rated Power is available intermittently for less than 3 h per every 12 h operation.
- Operating hours: 3,000 - 4,000 h per year.
- Overload: 110% is available for max. 25 h per year on emergency basis.

Typical Vessel Application:

- Offshore Vessels and Harbour Tugboats.

Auxiliary Generator

Main Power Supply

Typical Operation:

- Average Load Factor is 60 - 80% of Rated Power.
- Operating hours: 3,000 - 4,000 h per year.
- Momentary overload: 110% is available for governing purpose.

Emergency Power Supply

Typical Operation:

- Average Load Factor is 60% of Rated Power.
- Operating hours: up to 500 h per year.
- Overload: 110% can be used for less than 25 h per year.

Gas-Electric Propulsion

Typical Operation:

- Average Load Factor is 60 - 80% of Rated Power.
- Operating hours are 3,000 - 6,000 h per year.
- 100% of Rated Power is available for max. 3 h per every 12 h operation.

Typical Vessel Application:

- Offshore Vessels, Inland Cargo Vessels and Ferries.

FUEL CONSUMPTION METHOD

The fuel consumption varies according to test condition, specification and application of each customer.

To obtain the fuel consumption based on the most typical test condition, we adopted average fuel consumption recommended by ISO 8178 (E3 standard test cycle for propulsion application and D2 for auxiliary applications) except for SU Series*. The fuel consumption values published in this Marine Product Guide were calculated taking each steady-state mode into account. See weighting factors shown below.

* SU Series (Medium Speed Engines) belongs in a different category from our High Speed Engine models, SU Series indicates fuel consumption value at 100% Rated Power with g/kWh.

Weighting Factors of Type E3 ISO 8178 Test Cycles

Mode Number	1	2	3	4
Power (%)	100	75	50	25
Weighting Factor	0.20	0.50	0.15	0.15

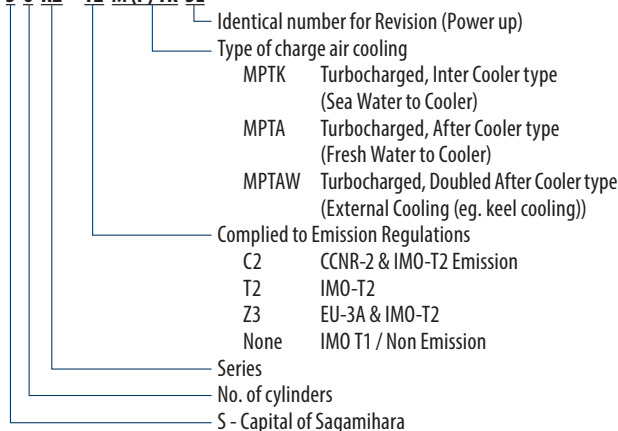
Weighting Factors of Type D2 ISO 8178 Test Cycles

Mode Number	1	2	3	4	5
Power (%)	100	75	50	25	10
Weighting Factor	0.05	0.25	0.30	0.30	0.10

Fuel consumption is based on ISO 3046/1 with 5% tolerance at Rated Power, weighing 836 g/liter based on the regulations of JIS (Japanese Industrial Standards) and a LHV of 42,780 kJ/kg, excluding pumps.

ENGINE MODEL NAME EXPLANATION

S 6 R2 - T2 M(P)TK 3L



Product Listing

Propulsion Products IMO Tier I / Non Emission - High Speed

Engine Model	kW	BHP	RPM	Rating	Emission	Page
6D16-T	129	173	2,700	HD	Not Regulated	16
6D16-T	142	190	2,700	HD	Non Emission	16
6D24-T	212	284	2,200	HD	Non Emission	16
6D24-TC	228	306	2,200	HD	Non Emission	17
S6B3-MPTK	345	462	1,940	UCD	IMO-T1	18
S6B3-MPTK	380	509	2,000	HD	IMO-T1	18
S6B3-MPTK	415	557	2,065	MD	IMO-T1	18
S6A3-MPTK	405	543	1,840	UCD	IMO-T1	19
S6A3-MPTK	445	597	1,900	HD	IMO-T1	19
S6A3-MPTK	490	657	1,960	MD	IMO-T1	19
S6R-MPTK	470	630	1,600	UCD	IMO-T1	20
S6R-MPTK	520	697	1,650	HD	IMO-T1	20
S6R-MPTK	605	811	1,800	MD	IMO-T1	20
S6R2-MPTK	480	643	1,350	UCD	IMO-T1	21
S6R2-MPTK	530	710	1,400	HD	IMO-T1	21
S6R2-MPTK	610	818	1,500	MD	IMO-T1	21
S12A2-MPTK	701	940	1,940	UCD	IMO-T1	22
S12A2-MPTK	776	1,040	2,000	HD	IMO-T1	22
S12A2-MPTK	858	1,150	2,100	MD	IMO-T1	22
S12R-MPTK	940	1,260	1,600	UCD	IMO-T1	23
S12R-MPTK	1,040	1,394	1,650	HD	IMO-T1	23
S12R-MPTK	1,210	1,622	1,800	MD	IMO-T1	23
S16R-MPTK	1,250	1,676	1,600	UCD	IMO-T1	24
S16R-MPTK	1,380	1,850	1,650	HD	IMO-T1	24
S16R-MPTK	1,610	2,158	1,800	MD	IMO-T1	24

Propulsion Products - IMO Tier II / CCNR-2 / EU-3A - High Speed

Engine Model	kW	BHP	RPM	Rating	Emission	Page
Engine						
6D16-T	129	173	2,700	HD	Not Regulated	25
6D24-TC	228	306	2,200	HD	On Request	26
S6B3-T2MPTAW	320	429	1,940	UCD	IMO-T2	27
S6B3-T2MPTAW	350	469	2,000	HD	IMO-T2	27
S6A3-MPTAW	221	296	1,530	UCD	IMO-T2	28
S6A3-MPTAW	360	483	1,840	UCD	IMO-T2 / CCNR-2	28
S6A3-MPTAW	385	516	1,800	MD	CCNR-2	28
S6R-MPTAW	447	599	1,600	UCD	IMO-T2	29
S6R-(Z3)MPTAW	470	630	1,600	UCD	IMO-T2 / EU-3A	29
S6R-MPTAW	520	697	1,650	HD	IMO-T2	29
S6R-(Z3)MPTAW	605	811	1,800	MD	IMO-T2 / EU-3A	29
S6R2-T2MPTK	395	530	1,350	UCD	IMO-T2	30
S6R2-T2MPTK	480	644	1,350	UCD	IMO-T2	30
S6R2-T2MPTK	530	711	1,400	HD	IMO-T2	30
S6R2-T2MPTK	610	818	1,500	MD	IMO-T2	30
S12A2-C2MPTK	634	850	1,940	UCD	IMO-T2 / CCNR-2	31

Engine Model	kW	BHP	RPM	Rating	Emission	Page
AW12A2-(Z3)MPT	701	940	1,940	UCD	IMO-T2 / EU-3A	32
S12A2-MPTAW	776	1,041	2,000	HD	IMO-T2	32
S12R-MPTAW	588	789	1,400	UCD	IMO-T2	33
S12R-MPTAW	749	1,004	1,500	UCD	IMO-T2	33
S12R-MPTAW	749	1,004	1,600	UCD	IMO-T2	33
S12R-(Z3)MPTAW	940	1,261	1,600	UCD	IMO-T2 / EU-3A	33
S12R-MPTAW	1,040	1,395	1,650	HD	IMO-T2	33
S16R-C2MPTK	1,250	1,676	1,600	UCD	IMO-T2 / CCNR-2	34
S16R-(Z3)MPTAW	1,250	1,676	1,600	UCD	IMO-T2 / EU-3A	35
S16R-MPTAW	1,380	1,851	1,650	HD	IMO-T2	35
S16R2-T2MPTAW	1,450	1,944	1,350	UCD	IMO-T2	36
S16R2-T2MPTAW	1,600	2,146	1,400	HD	IMO-T2	36
S16R2-T2MPTAW	1,885	2,528	1,500	MD	IMO-T2	36
Propulsion Package (With Built-up Heat exchanger & Sea water pump)						
S6B3-T2MPTK2	378	507	2,001	HD	IMO-T2	37
S6B3-T2MPTK2	448	601	2,001	MD	IMO-T2	37
S6A3-T2MPTK3	502	673	1,900	HD	IMO-T2	38
S6A3-T2MPTK3	558	748	1,900	MD	IMO-T2	38
S6R-T2MPTK	470	630	1,600	UCD	IMO-T2	39
S6R-T2MPTK	520	697	1,650	HD	IMO-T2	39
S6R-T2MPTK	605	811	1,800	MD	IMO-T2	39
S6R2-T2MPTK	480	643	1,350	UCD	IMO-T2	39
S6R2-T2MPTK	530	711	1,400	HD	IMO-T2	39
S6R2-T2MPTK	610	818	1,500	MD	IMO-T2	39
S6R2-T2MPTK3	691	927	1,406	HD	IMO-T2	40
S6R2-T2MPTK3	759	1,018	1,406	MD	IMO-T2	40
S12A2-T2MPTK	701	940	1,800	UCD	IMO-T2	41
S12A2-T2MPTK	776	1,041	1,860	HD	IMO-T2	41
S12A2-T2MPTK	858	1,151	1,920	MD	IMO-T2	41
S12R-T2MPTK	940	1,261	1,600	UCD	IMO-T2	42
S12R-T2MPTK	1,040	1,395	1,650	HD	IMO-T2	42
S12R-T2MPTK	1,210	1,623	1,800	MD	IMO-T2	42
S16R-T2MPTK	1,250	1,676	1,600	UCD	IMO-T2	43
S16R-T2MPTK	1,380	1,851	1,650	HD	IMO-T2	43
S16R-T2MPTK	1,610	2,159	1,800	MD	IMO-T2	43
S16R2-T2MPTK	1,450	1,944	1,350	UCD	IMO-T2	44
S16R2-T2MPTK	1,600	2,156	1,400	HD	IMO-T2	44
S16R2-T2MPTK	1,885	2,528	1,500	MD	IMO-T2	44

Propulsion Products - IMO Tier II / CCNR-2 - Medium Speed

Engine Model	kW	BHP	RPM	Rating	Emission	Page
S6U-C2MPTK	680	912	1,100	UCD	IMO-T2	45
S6U-C2MPTK	719	964	1,100	UCD	IMO-T2	45
S6U-C2MPTK	749	1,004	1,100	UCD	IMO-T2	45
S6U-C2MPTK	1,007	1,350	1,060	UCD	IMO-T2 / CCNR-2	45
S6U-C2MPTK	1,103	1,479	1,150	HT	IMO-T2 / CCNR-2	45
S6U-C2MPTK	1,119	1,499	1,100	HD	IMO-T2 / CCNR-2	45
S6U2-MPTK	1,040	1,395	930	UCD	IMO-T2 / CCNR-2	46
S6U2-MPTK	1,156	1,550	960	HD	IMO-T2 / CCNR-2	46
S8U-C2MPTK	1,343	1,801	1,060	UCD	IMO-T2 / CCNR-2	47
S8U-C2MPTK	1,470	1,971	1,150	HT	IMO-T2 / CCNR-2	47
S8U-C2MPTK	1,492	2,001	1,100	HD	IMO-T2 / CCNR-2	47
S12U-MPTK	2,014	2,701	1,060	UCD	IMO-T2	48
S12U-MPTK	2,205	2,957	1,150	HT	IMO-T2	48
S12U-MPTK	2,238	3,001	1,100	HD	IMO-T2	48
S16U-MPTK	2,686	3,602	1,060	UCD	IMO-T2	49
S16U-MPTK	2,940	3,943	1,150	HT	IMO-T2	49
S16U-MPTK	2,984	4,002	1,100	HD	IMO-T2	49

Diesel-Electric Propulsion Products - IMO Tier II / High Speed

Engine Model	kW	BHP	RPM	Hz	Emission	Page
50 Hz						
S6R-MPTAW	545	731	1,500	50	IMO-T2	52
S6R2-T2MPTK	640	858	1,500	50	IMO-T2	53
S12A2-MPTAW	709	951	1,500	50	IMO-T2	54
S12R-MPTAW	1,120	1,502	1,500	50	IMO-T2	55
S16R-MPTAW	1,500	2,012	1,500	50	IMO-T2	56
S16R2-T2MPTAW	1,960	2,628	1,500	50	IMO-T2	57
60 Hz						
S6R-MPTAW	577	774	1,800	60	IMO-T2	52
S6R2-T2MPTK	500	671	1,200	60	IMO-T2	53
S12A2-MPTAW	752	1,008	1,800	60	IMO-T2	54
S12R-MPTAW	840	1,126	1,200	60	IMO-T2	55
S12R-MPTAW	1,154	1,548	1,800	60	IMO-T2	55
S16R-MPTAW	1,120	1,502	1,200	60	IMO-T2	56
S16R-MPTAW	1,536	2,060	1,800	60	IMO-T2	56
S16R2-T2MPTAW	1,568	2,103	1,200	60	IMO-T2	57

Diesel-Electric Propulsion Products - IMO Tier II / Medium Speed

Engine Model	kW	BHP	RPM	Hz	Emission	Page
50 Hz						
S6U-MPTK	1,142	1,531	1,000	50	IMO-T2	58
S6U-MPTK	1,270	1,703	1,000	50	IMO-T2	58
S6U2-MPTK	1,234	1,655	1,000	50	IMO-T2	59
S6U2-MPTK	1,363	1,828	1,000	50	IMO-T2	59

Engine Model	kW	BHP	RPM	Hz	Emission	Page
S8U-MPTK	1,522	2,041	1,000	50	IMO-T2	60
S8U-MPTK	1,693	2,270	1,000	50	IMO-T2	60
S12U-MPTK	2,283	3,062	1,000	50	IMO-T2	61
S12U-MPTK	2,541	3,408	1,000	50	IMO-T2	61
S16U-MPTK	3,045	4,083	1,000	50	IMO-T2	62
S16U-MPTK	3,388	4,543	1,000	50	IMO-T2	62
60 Hz						
S6U-MPTK	1,045	1,401	900	60	IMO-T2	58
S6U-MPTK	1,205	1,616	1,200	60	IMO-T2	58
S6U-MPTK	1,150	1,542	900	60	IMO-T2	58
S6U-MPTK	1,343	1,801	1,200	60	IMO-T2	58
S6U2-MPTK	1,161	1,557	900	60	IMO-T2	59
S6U2-MPTK	1,250	1,676	900	60	IMO-T2	59
S8U-MPTK	1,394	1,869	900	60	IMO-T2	60
S8U-MPTK	1,608	2,156	1,200	60	IMO-T2	60
S8U-MPTK	1,533	2,056	900	60	IMO-T2	60
S8U-MPTK	1,790	2,400	1,200	60	IMO-T2	60
S12U-MPTK	2,090	2,803	900	60	IMO-T2	61
S12U-MPTK	2,412	3,235	1,200	60	IMO-T2	61
S12U-MPTK	2,299	3,083	900	60	IMO-T2	61
S12U-MPTK	2,685	3,601	1,200	60	IMO-T2	61
S16U-MPTK	2,787	3,737	900	60	IMO-T2	62
S16U-MPTK	3,215	4,311	1,200	60	IMO-T2	62
S16U-MPTK	3,065	4,110	900	60	IMO-T2	62
S16U-MPTK	3,580	4,801	1,200	60	IMO-T2	62

Auxiliary Generator Products - IMO Tier I / Non Emission - High Speed

Engine Model	kW	BHP	RPM	Hz	Emission	Page
50 Hz						
6D16-T	106	142	1,500	50	Not Regulated	64
6D24-T	169	227	1,500	50	Non Emission	65
6D24-TC	181	243	1,500	50	IMO-T1	65
S6B3-MPTA	335	449	1,500	50	IMO-T1	66
S6A3-MPTA	400	536	1,500	50	IMO-T1	67
S6R-MPTA	515	691	1,500	50	IMO-T1	68
S6R2-MPTA	595	798	1,500	50	IMO-T1	69
S12A2-MPTA	679	911	1,500	50	IMO-T1	70
S12R-MPTA	1,110	1,489	1,500	50	IMO-T1	71
S16R-MPTA	1,480	1,985	1,500	50	IMO-T1	72
60 Hz						
6D16-T	129	173	1,800	60	Not Regulated	64
6D24-T	195	262	1,800	60	Non Emission	65
6D24-TC	218	292	1,800	60	IMO-T1	65
S6B3-MPTA	375	503	1,800	60	IMO-T1	66
S6A3-MPTA	460	617	1,800	60	IMO-T1	67

Engine Model	kW	BHP	RPM	Hz	Emission	Page
S6R-MPTA	595	798	1,800	60	IMO-T1	68
S6R2-MPTA	485	650	1,200	60	IMO-T1	69
S12A2-MPTA	761	1,021	1,800	60	IMO-T1	70
S12R-MPTA	1,190	1,596	1,800	60	IMO-T1	71
S16R-MPTA	1,590	2,132	1,800	60	IMO-T1	72

Auxiliary Generator Products - IMO Tier II / CCNR-2 / EU-3A - High Speed

Engine Model	kW	BHP	RPM	Hz	Emission	Page
50 Hz						
6D16-T	106	142	1,500	50	Not Regulated	73
6D24-TC	181	243	1,500	50	IMO-T2	74
S6B3-T2MPTAW	335	449	1,500	50	IMO-T2	75
S6R-(Z3)MPTAW	545	731	1,500	50	IMO-T2	76
S6R2-T2MPTK	640	858	1,500	50	IMO-T2	77
S12A2-MPTAW	709	951	1,500	50	IMO-T2	78
S12R-MPTAW	1,120	1,502	1,500	50	IMO-T2	79
S16R-MPTAW	1,500	2,012	1,500	50	IMO-T2	80
S16R2-T2MPTAW	1,960	2,628	1,500	50	IMO-T2	81
60 Hz						
6D16-T	129	173	1,800	60	Not Regulated	73
6D24-TC	218	292	1,800	60	IMO-T2	74
S6B3-T2MPTAW	375	503	1,800	60	IMO-T2	75
S6R-(Z3)MPTAW	635	852	1,800	60	IMO-T2 / EU-3A	76
S6R2-T2MPTK	500	671	1,200	60	IMO-T2	77
S12A2-MPTAW	828	1,110	1,800	60	IMO-T2	78
S12R-MPTAW	840	1,126	1,200	60	IMO-T2	79
S12R-MPTAW	1,270	1,703	1,800	60	IMO-T2	79
S16R-MPTAW	1,120	1,502	1,200	60	IMO-T2	80
S16R-MPTAW	1,690	2,266	1,800	60	IMO-T2	80
S16R2-T2MPTAW	1,568	2,103	1,200	60	IMO-T2	81

Auxiliary Generator Products - IMO Tier II - Medium Speed

Engine Model	kW	BHP	RPM	Hz	Emission	Page
50 Hz						
S6U-MPTK	1,270	1,703	1,000	50	IMO-T2	82
S6U2-MPTK	1,363	1,828	1,000	50	IMO-T2	83
S8U-MPTK	1,693	2,270	1,000	50	IMO-T2	84
S12U-MPTK	2,541	3,408	1,000	50	IMO-T2	85
S16U-MPTK	3,388	4,543	1,000	50	IMO-T2	86
60 Hz						
S6U-MPTK	1,150	1,542	900	60	IMO-T2	82
S6U-MPTK	1,343	1,801	1,200	60	IMO-T2	82
S6U2-MPTK	1,250	1,676	900	60	IMO-T2	83
S8U-MPTK	1,533	2,056	900	60	IMO-T2	84
S8U-MPTK	1,790	2,400	1,200	60	IMO-T2	84

Engine Model	kW	BHP	RPM	Hz	Emission	Page
S12U-MPTK	2,299	3,083	900	60	IMO-T2	85
S12U-MPTK	2,685	3,601	1,200	60	IMO-T2	85
S16U-MPTK	3,065	4,110	900	60	IMO-T2	86
S16U-MPTK	3,580	4,801	1,200	60	IMO-T2	86

Generator Set Products - IMO Tier II / EU-3A

Engine Model	kW	BHP	RPM	Hz	Emission	Page
Diesel-Electric Propulsion						
50 Hz						
MAS 650-S	652	522	1,500	50	IMO-T2	88
MAS 760-S	765	612	1,500	50	IMO-T2	89
MAS 850-S	847	678	1,500	50	IMO-T2	90
MAS 1350-S	1,351	1,081	1,500	50	IMO-T2	91
MAS 1795-S	1,796	1,437	1,500	50	IMO-T2	92
MAS 2350-S	2,358	1,886	1,500	50	IMO-T2	93
60 Hz						
MAS 650-S	684	548	1,800	60	IMO-T2	88
MAS 760-S	594	476	1,200	60	IMO-T2	89
MAS 850-S	898	718	1,800	60	IMO-T2	90
MAS 1350-S	999	799	1,200	60	IMO-T2	91
MAS 1350-S	1,385	1,108	1,800	60	IMO-T2	91
MAS 1795-S	1,337	1,070	1,200	60	IMO-T2	92
MAS 1795-S	1,857	1,485	1,800	60	IMO-T2	92
MAS 2350-S	1,881	1,505	1,200	60	IMO-T2	93
Auxiliary						
50 Hz						
MAS 650-S	652	522	1,500	50	IMO-T2	88
MAS 760-S	765	612	1,500	50	IMO-T2	89
MAS 850-S	847	678	1,500	50	IMO-T2	90
MAS 1350-S	1,351	1,081	1,500	50	IMO-T2	91
MAS 1795-S	1,796	1,437	1,500	50	IMO-T2	92
MAS 1795-S	1,796	1,437	1,500	50	IMO-T2	92
MAS 2350-S	2,358	1,886	1,500	50	IMO-T2	93
60 Hz						
MAS 650-S	753	603	1,800	60	IMO-T2 / EU-3A	88
MAS 760-S	594	476	1,200	60	IMO-T2	89
MAS 850-S	988	790	1,800	60	IMO-T2	90
MAS 1350-S	999	799	1,200	60	IMO-T2	91
MAS 1350-S	1,529	1,223	1,800	60	IMO-T2	91
MAS 1795-S	1,337	1,070	1,200	60	IMO-T2	92
MAS 1795-S	2,041	1,633	1,800	60	IMO-T2	92
MAS 2350-S	1,881	1,505	1,200	60	IMO-T2	93

Gas-Electric Propulsion Products*

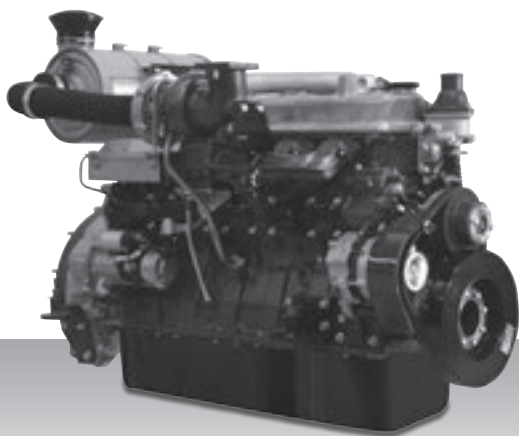
Engine Model	kW	BHP	RPM	Hz	Emission	Page
50 Hz						
GS6R-MPTK	368	494	1,500	50	E2	96
GS6R2-MPTK	on request	on request	1,500	50	E2	97
GS12R-MPTK	722	968	1,500	50	E2	98
GS16R-MPTK	959	1,286	1,500	50	E2	99
GS16R2-MPTK	1,563	2,096	1,500	50	E2	100
60 Hz						
GS6R-MPTK	315	422	1,200	60	E2	96
GS6R2-MPTK	394	528	1,200	60	E2	97
GS12R-MPTK	632	848	1,200	60	E2	98
GS16R-MPTK	845	1,133	1,200	60	E2	99
GS16R2-MPTK	1,250	1,676	1,200	60	E2	100

* For Gas direct Propulsion FPP and CPP please contact Mitsubishi Turbocharger and Engine Europe B.V.

Propulsion Specifications

Propulsion - IMO Tier I / Non Emission
High Speed

6D16-T



6-cylinder, 4-cycle, Water cooled, Diesel Engine
Direct-injection, Turbocharged with Air-cooler.

Bore x Stroke (mm) : 118 x 115
Displacement (L) : 7.54

Commercial Rating

kW	BHP	RPM	Rating	Fuel Cons. L/hr*	Emission
129	173	2,700	HD	on request	Not Regulated
142	190	2,700	HD	30.5	Non Emission

*Average fuel consumption according to ISO, see page 6.
Specifications/data subject to change without prior notice.

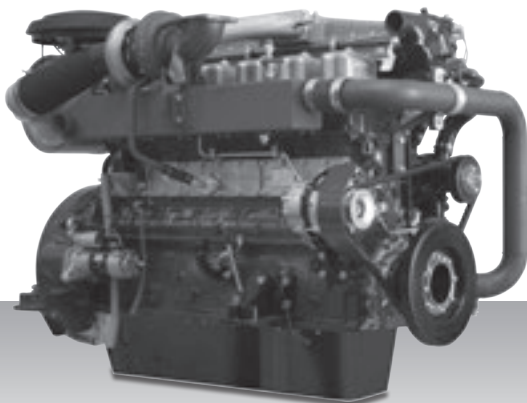
Product Dimensions & Dry Weight

L (mm) : 1,335
W (mm) : 731
H (mm) : 830
Dry Weight (kg) : 575

Dimensions and Weight are based on standard configuration.

Propulsion - IMO Tier I / Non Emission
High Speed

6D24-T(C)



6-cylinder, 4-cycle, Water cooled, Diesel Engine
Direct-injection, Turbocharged with Air-cooler.

Bore x Stroke (mm) : 130 x 150

Displacement (L) : 11.95

Commercial Rating

kW	BHP	RPM	Rating	Fuel Cons. L/hr*	Emission
212	284	2,200	HD	42.6	Non Emission
228	306	2,200	HD	on request	Non Emission

*Average fuel consumption according to ISO, see page 6.
Specifications/data subject to change without prior notice.

Product Dimensions & Dry Weight

L (mm) : 1,535

W (mm) : 880

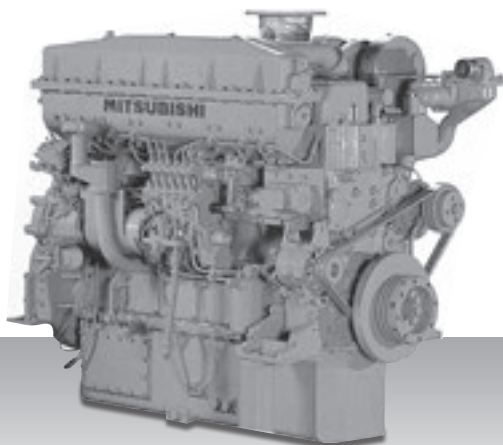
H (mm) : 1,235

Dry Weight (kg) : 1,209

Dimensions and Weight are based on standard configuration.

Propulsion - IMO Tier I / Non Emission
High Speed

S6B3-MPTK



6-cylinder, 4-cycle, Water cooled, Diesel Engine
Direct-injection, Turbocharged with Air-cooler.

Bore x Stroke (mm) : 135 x 170
Displacement (L) : 14.60

Commercial Rating

kW	BHP	RPM	Rating	Fuel Cons. L/hr*	Emission
345	463	1,940	UCD	59.6	IMO-T1
380	510	2,000	HD	68.0	IMO-T1
415	557	2,065	MD	on request	IMO-T1

*Average fuel consumption according to ISO, see page 6.
Specifications/data subject to change without prior notice.

Product Dimensions & Dry Weight

L (mm) : 1,834
W (mm) : 873
H (mm) : 1,331
Dry Weight (kg) : 1,300

Dimensions and Weight are based on standard configuration.

Propulsion - IMO Tier I / Non Emission
High Speed

S6A3-MPTK



6-cylinder, 4-cycle, Water cooled, Diesel Engine
Direct-injection, Turbocharged with Air-cooler.

Bore x Stroke (mm) : 150 x 175
Displacement (L) : 18.56

Commercial Rating

kW	BHP	RPM	Rating	Fuel Cons. L/hr*	Emission
405	543	1,840	UCD	69.8	IMO-T1
445	597	1,900	HD	78.3	IMO-T1
490	657	1,960	MD	85.9	IMO-T1

*Average fuel consumption according to ISO, see page 6.
Specifications/data subject to change without prior notice.

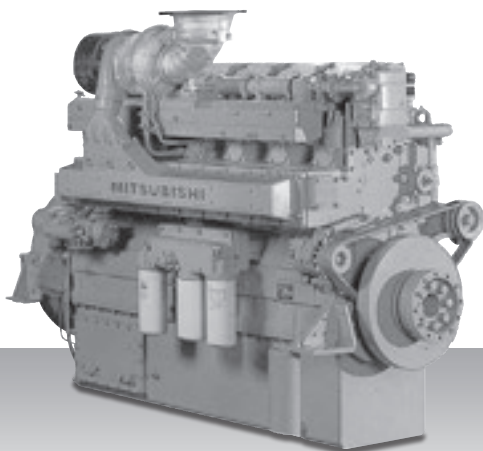
Product Dimensions & Dry Weight

L (mm) : 2,037
W (mm) : 927
H (mm) : 1,371
Dry Weight (kg) : 1,900

Dimensions and Weight are based on standard configuration.

Propulsion - IMO Tier I / Non Emission
High Speed

S6R-MPTK



6-cylinder, 4-cycle, Water cooled, Diesel Engine
Direct-injection, Turbocharged with Air-cooler.

Bore x Stroke (mm) : 170 x 180
Displacement (L) : 24.51

Commercial Rating

kW	BHP	RPM	Rating	Fuel Cons. L/hr*	Emission
470	630	1,600	UCD	79.0	IMO-T1
520	697	1,650	HD	87.9	IMO-T1
605	811	1,800	MD	101.3	IMO-T1

*Average fuel consumption according to ISO, see page 6.
Specifications/data subject to change without prior notice.

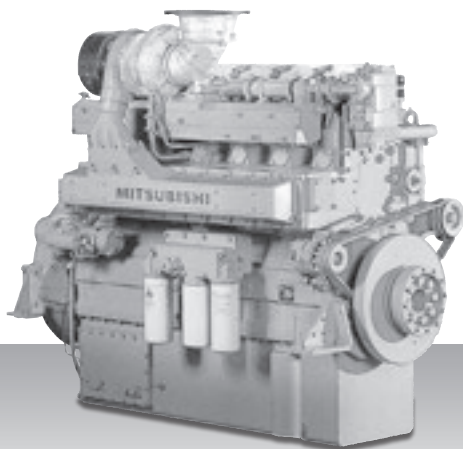
Product Dimensions & Dry Weight

L (mm) : 1,811
W (mm) : 1,108
H (mm) : 1,614
Dry Weight (kg) : 2,830

Dimensions and Weight are based on standard configuration.

Propulsion - IMO Tier I / Non Emission
High Speed

S6R2-MPTK



6-cylinder, 4-cycle, Water cooled, Diesel Engine
Direct-injection, Turbocharged with Air-cooler.

Bore x Stroke (mm) : 170 x 220
Displacement (L) : 29.96

Commercial Rating

kW	BHP	RPM	Rating	Fuel Cons. L/hr*	Emission
480	644	1,350	UCD	78.9	IMO-T1
530	711	1,400	HD	86.6	IMO-T1
610	818	1,500	MD	100.4	IMO-T1

*Average fuel consumption according to ISO, see page 6.
Specifications/data subject to change without prior notice.

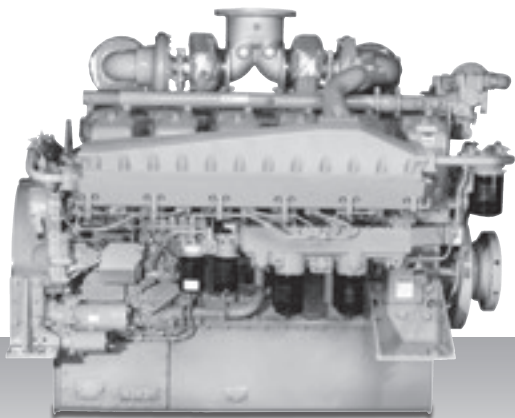
Product Dimensions & Dry Weight

L (mm) : 1,811
W (mm) : 1,108
H (mm) : 1,694
Dry Weight (kg) : 2,960

Dimensions and Weight are based on standard configuration.

Propulsion - IMO Tier I / Non Emission
High Speed

S12A2-MPTK



6-cylinder, 4-cycle, Water cooled, Diesel Engine
Direct-injection, Turbocharged with Air-cooler.

Bore x Stroke (mm) : 150 x 160
Displacement (L) : 33.93

Commercial Rating

kW	BHP	RPM	Rating	Fuel Cons. L/hr*	Emission
701	940	1,940	UCD	122.3	IMO-T1
776	1,041	2,000	HD	136.6	IMO-T1
858	1,151	2,100	MD	152.7	IMO-T1

*Average fuel consumption according to ISO, see page 6.
Specifications/data subject to change without prior notice.

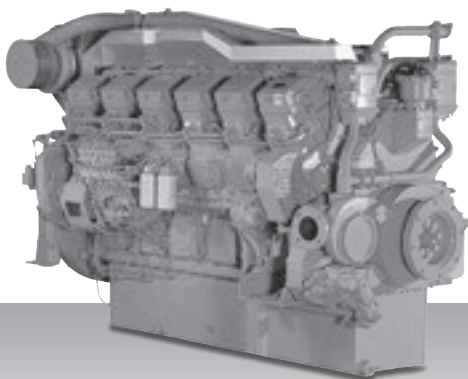
Product Dimensions & Dry Weight

L (mm) : 2,291
W (mm) : 1,418
H (mm) : 1,596
Dry Weight (kg) : 3,720

Dimensions and Weight are based on standard configuration.

Propulsion - IMO Tier I / Non Emission
High Speed

S12R-MPTK



12-cylinder, 4-cycle, Water cooled, Diesel Engine
Direct-injection, Turbocharged with Air-cooler.

Bore x Stroke (mm) : 170 x 180
Displacement (L) : 49.03

Commercial Rating

kW	BHP	RPM	Rating	Fuel Cons. L/hr*	Emission
940	1,261	1,600	UCD	158.0	IMO-T1
1,040	1,395	1,650	HD	176.5	IMO-T1
1,210	1,623	1,800	MD	202.9	IMO-T1

*Average fuel consumption according to ISO, see page 6.
Specifications/data subject to change without prior notice.

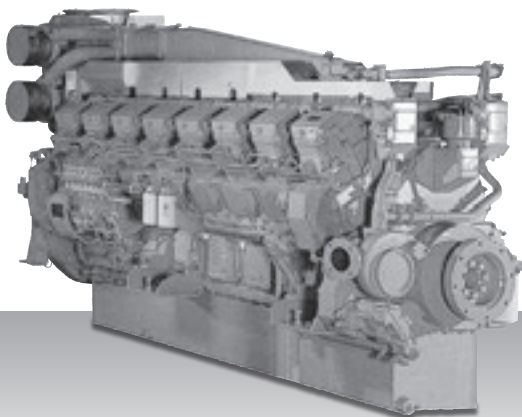
Product Dimensions & Dry Weight

L (mm) : 2,376
W (mm) : 1,512
H (mm) : 1,731
Dry Weight (kg) : 5,320

Dimensions and Weight are based on standard configuration.

Propulsion - IMO Tier I / Non Emission
High Speed

S16R-MPTK



16-cylinder, 4-cycle, Water cooled, Diesel Engine
Direct-injection, Turbocharged with Air-cooler.

Bore x Stroke (mm) : 170 x 180
Displacement (L) : 65.37

Commercial Rating

kW	BHP	RPM	Rating	Fuel Cons. L/hr*	Emission
1,250	1,676	1,600	UCD	206.0	IMO-T1
1,380	1,851	1,650	HD	234.4	IMO-T1
1,610	2,159	1,800	MD	268.7	IMO-T1

*Average fuel consumption according to ISO, see page 6.
Specifications/data subject to change without prior notice.

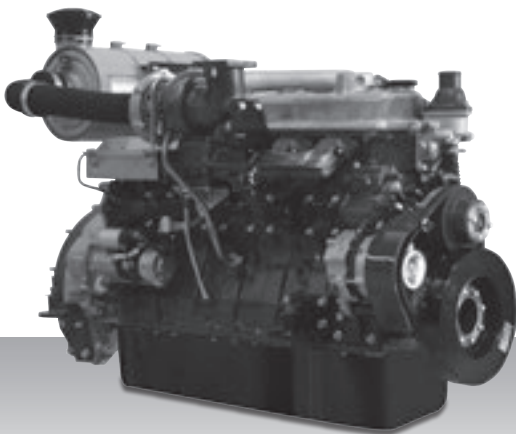
Product Dimensions & Dry Weight

L (mm) : 2,931
W (mm) : 1,512
H (mm) : 1,960
Dry Weight (kg) : 6,780

Dimensions and Weight are based on standard configuration.

Propulsion - IMO Tier II / CCNR-2 / EU-3A
High Speed - Engine

6D16-T



6-cylinder, 4-cycle, Water cooled, Diesel Engine
Direct-injection, Turbocharged with Air-cooler.

Bore x Stroke (mm) : 118 x 115
Displacement (L) : 7.54

Commercial Rating

kW	BHP	RPM	Rating	Fuel Cons. L/hr*	Emission
129	173	2,700	HD	on request	Not Regulated

*Average fuel consumption according to ISO, see page 6.
Specifications/data subject to change without prior notice.

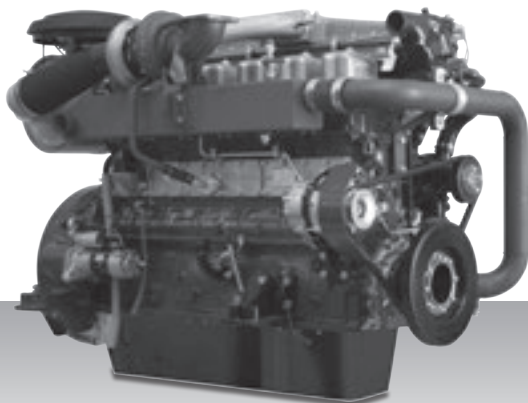
Product Dimensions & Dry Weight

L (mm) : 1,335
W (mm) : 731
H (mm) : 830
Dry Weight (kg) : 575

Dimensions and Weight are based on standard configuration.

Propulsion - IMO Tier II / CCNR-2 / EU-3A
High Speed - Engine

6D24-TC



6-cylinder, 4-cycle, Water cooled, Diesel Engine
Direct-injection, Turbocharged with Air-cooler.

Bore x Stroke (mm) : 130 x 150
Displacement (L) : 11.95

Commercial Rating

kW	BHP	RPM	Rating	Fuel Cons. L/hr*	Emission
228	306	2,200	HD	on request	on request

*Average fuel consumption according to ISO, see page 6.
Specifications/data subject to change without prior notice.

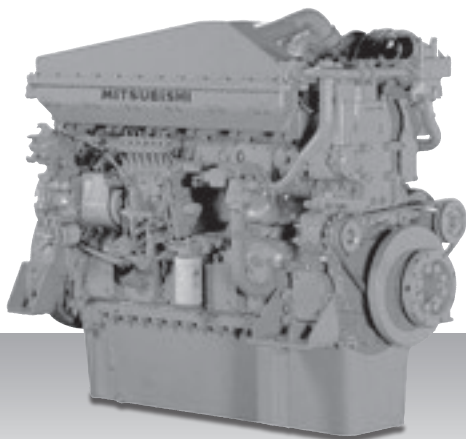
Product Dimensions & Dry Weight

L (mm) : 1,535
W (mm) : 880
H (mm) : 1,235
Dry Weight (kg) : 1,209

Dimensions and Weight are based on standard configuration.

Propulsion - IMO Tier II / CCNR-2 / EU-3A
High Speed - Engine

S6B3-T2MPTAW



6-cylinder, 4-cycle, Water cooled, Diesel Engine
Direct-injection, Turbocharged with Air-cooler.

Bore x Stroke (mm) : 135 x 170
Displacement (L) : 14.60

Commercial Rating

kW	BHP	RPM	Rating	Fuel Cons. L/hr*	Emission
320	429	1,940	UCD	on request	IMO-T2
350	469	2,000	HD	on request	IMO-T2

*Average fuel consumption according to ISO, see page 6.
Specifications/data subject to change without prior notice.

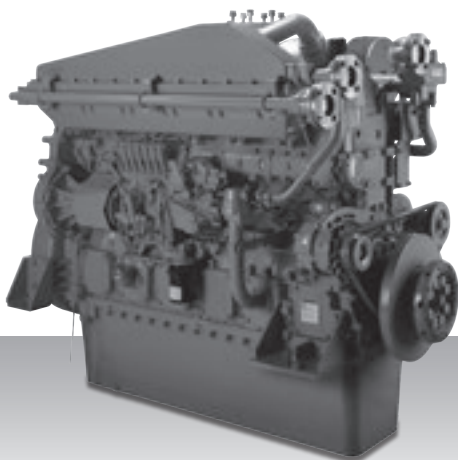
Product Dimensions & Dry Weight

L (mm) : 1,465
W (mm) : 873
H (mm) : 1,331
Dry Weight (kg) : 1,300

Dimensions and Weight are based on standard configuration.

Propulsion - IMO Tier II / CCNR-2 / EU-3A
High Speed - Engine

S6A3-MPTAW



6-cylinder, 4-cycle, Water cooled, Diesel Engine
Direct-injection, Turbocharged with Air-cooler.

Bore x Stroke (mm) : 150 x 175
Displacement (L) : 18.56

Commercial Rating

kW	BHP	RPM	Rating	Fuel Cons. L/hr*	Emission
221	296	1,530	UCD	on request	IMO-T2
360	483	1,840	UCD	65.7	IMO-T2 / CCNR-2
385	516	1,800	MD	on request	CCNR-2

*Average fuel consumption according to ISO, see page 6.
Specifications/data subject to change without prior notice.

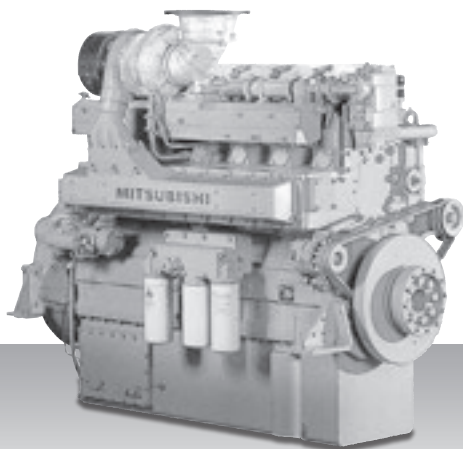
Product Dimensions & Dry Weight

L (mm) : 1,636
W (mm) : 1,036
H (mm) : 1,421
Dry Weight (kg) : 1,900

Dimensions and Weight are based on standard configuration.

Propulsion - IMO Tier II / CCNR-2 / EU-3A
High Speed - Engine

S6R-(Z3)MPTAW



6-cylinder, 4-cycle, Water cooled, Diesel Engine
Direct-injection, Turbocharged with Air-cooler.

Bore x Stroke (mm) : 170 x 180
Displacement (L) : 24.51

Commercial Rating

kW	BHP	RPM	Rating	Fuel Cons. L/hr*	Emission
447	599	1,600	UCD	on request	IMO-T2
470	630	1,600	UCD	80.5	IMO-T2 / EU-3A
520	697	1,650	HD	89.0	IMO-T2
605	811	1,800	MD	on request	IMO-T2 / EU-3A

*Average fuel consumption according to ISO, see page 6.
Specifications/data subject to change without prior notice.

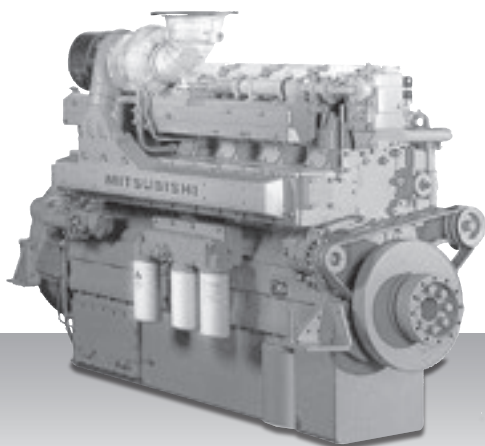
Product Dimensions & Dry Weight

L (mm) : 1,786
W (mm) : 1,220
H (mm) : 1,650
Dry Weight (kg) : 2,913

Dimensions and Weight are based on standard configuration.

Propulsion - IMO Tier II / CCNR-2 / EU-3A
High Speed - Engine

S6R2-T2MPTK



6-cylinder, 4-cycle, Water cooled, Diesel Engine
Direct-injection, Turbocharged with Air-cooler.

Bore x Stroke (mm) : 170 x 220
Displacement (L) : 29.96

Commercial Rating

kW	BHP	RPM	Rating	Fuel Cons. L/hr*	Emission
395	530	1,350	UCD	on request	IMO-T2
480	644	1,350	UCD	79.9	IMO-T2
530	711	1,400	HD	88.7	IMO-T2
610	818	1,500	MD	101.5	IMO-T2

*Average fuel consumption according to ISO, see page 6.
Specifications/data subject to change without prior notice.

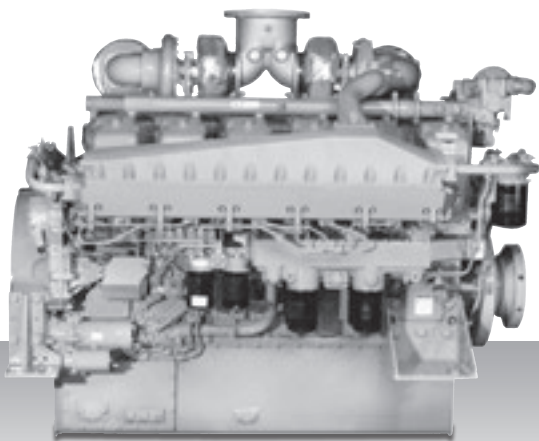
Product Dimensions & Dry Weight

L (mm) : 2,207
W (mm) : 1,156
H (mm) : 1,695
Dry Weight (kg) : 3,000

Dimensions and Weight are based on standard configuration.

Propulsion - IMO Tier II / CCNR-2 / EU-3A
High Speed - Engine

S12A2-C2MPTK



12-cylinder, 4-cycle, Water cooled, Diesel Engine
Direct-injection, Turbocharged with Air-cooler.

Bore x Stroke (mm) : 150 x 160
Displacement (L) : 33.93

Commercial Rating

kW	BHP	RPM	Rating	Fuel Cons. L/hr*	Emission
634	850	1,940	UCD	111.9	IMO-T2 / CCNR-2

*Average fuel consumption according to ISO, see page 6.
Specifications/data subject to change without prior notice.

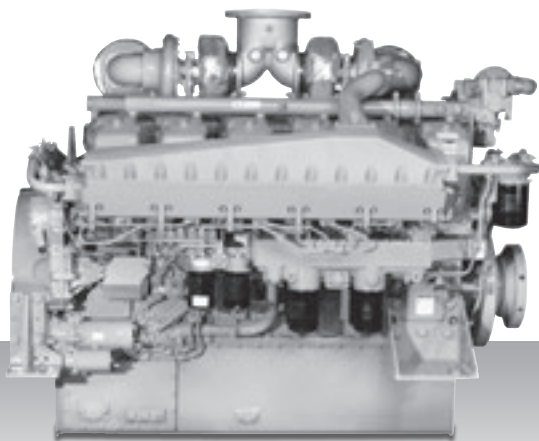
Product Dimensions & Dry Weight

L (mm) : 1,948
W (mm) : 1,442
H (mm) : 1,596
Dry Weight (kg) : 3,380

Dimensions and Weight are based on standard configuration.

Propulsion - IMO Tier II / CCNR-2 / EU-3A
High Speed - Engine

S12A2-(Z3)MPTAW



12-cylinder, 4-cycle, Water cooled, Diesel Engine
Direct-injection, Turbocharged with Air-cooler.

Bore x Stroke (mm) : 150 x 160
Displacement (L) : 33.93

Commercial Rating

kW	BHP	RPM	Rating	Fuel Cons. L/hr*	Emission
701	940	1,940	UCD	119.0	IMO-T2 / EU-3A
776	1,041	2,000	HD	131.5	IMO-T2

*Average fuel consumption according to ISO, see page 6.
Specifications/data subject to change without prior notice.

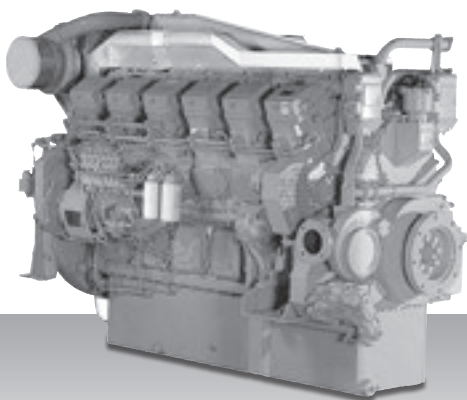
Product Dimensions & Dry Weight

L (mm) : 2,059
W (mm) : 1,654
H (mm) : 1,596
Dry Weight (kg) : 3,840

Dimensions and Weight are based on standard configuration.

Propulsion - IMO Tier II / CCNR-2 / EU-3A
High Speed - Engine

S12R-(Z3)MPTAW



12-cylinder, 4-cycle, Water cooled, Diesel Engine
Direct-injection, Turbocharged with Air-cooler.

Bore x Stroke (mm) : 170 x 180
Displacement (L) : 49.03

Commercial Rating

kW	BHP	RPM	Rating	Fuel Cons. L/hr*	Emission
588	789	1,400	UCD	on request	IMO-T2
749	1,004	1,500	UCD	on request	IMO-T2
749	1,004	1,600	UCD	on request	IMO-T2
940	1,261	1,600	UCD	160.5	IMO-T2 / EU-3A
1,040	1,395	1,650	HD	178.7	IMO-T2

*Average fuel consumption according to ISO, see page 6.
Specifications/data subject to change without prior notice.

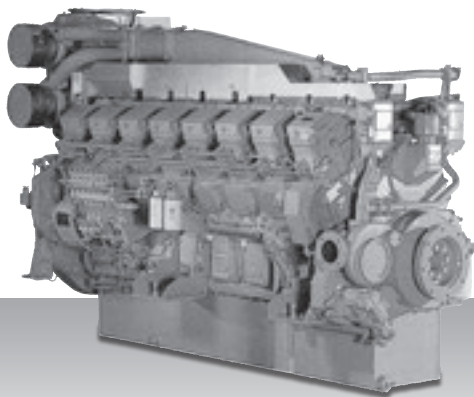
Product Dimensions & Dry Weight

L (mm) : 2,416
W (mm) : 1,585
H (mm) : 1,807
Dry Weight (kg) : 5,470

Dimensions and Weight are based on standard configuration.

Propulsion - IMO Tier II / CCNR-2 / EU-3A
High Speed - Engine

S16R-C2MPTK



16-cylinder, 4-cycle, Water cooled, Diesel Engine
Direct-injection, Turbocharged with Air-cooler.

Bore x Stroke (mm) : 170 x 180
Displacement (L) : 65.37

Commercial Rating

kW	BHP	RPM	Rating	Fuel Cons. L/hr*	Emission
1,250	1,676	1,600	UCD	216.3	IMO-T2 / CCNR-2

*Average fuel consumption according to ISO, see page 6.
Specifications/data subject to change without prior notice.

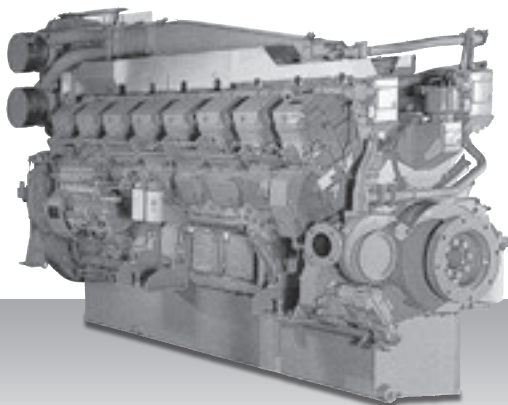
Product Dimensions & Dry Weight

L (mm) : 2,930
W (mm) : 1,512
H (mm) : 1,960
Dry Weight (kg) : 6,780

Dimensions and Weight are based on standard configuration.

Propulsion - IMO Tier II / CCNR-2 / EU-3A
High Speed - Engine

S16R-(Z3)MPTAW



16-cylinder, 4-cycle, Water cooled, Diesel Engine
Direct-injection, Turbocharged with Air-cooler.

Bore x Stroke (mm) : 170 x 180
Displacement (L) : 65.37

Commercial Rating

kW	BHP	RPM	Rating	Fuel Cons. L/hr*	Emission
1,250	1,676	1,600	UCD	214.1	IMO-T2 / EU-3A
1,380	1,851	1,650	HD	236.6	IMO-T2

*Average fuel consumption according to ISO, see page 6.
Specifications/data subject to change without prior notice.

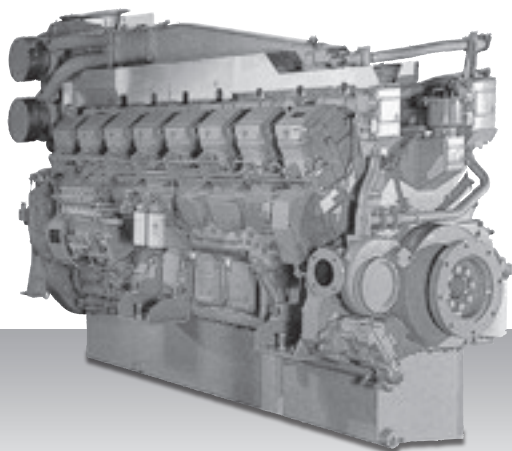
Product Dimensions & Dry Weight

L (mm) : 2,971
W (mm) : 1,585
H (mm) : 1,960
Dry Weight (kg) : 6,950

Dimensions and Weight are based on standard configuration.

Propulsion - IMO Tier II / CCNR-2 / EU-3A
High Speed - Engine

S16R2-T2MPTAW



16-cylinder, 4-cycle, Water cooled, Diesel Engine
Direct-injection, Turbocharged with Air-cooler.

Bore x Stroke (mm) : 170 x 220
Displacement (L) : 79.90

Commercial Rating

kW	BHP	RPM	Rating	Fuel Cons. L/hr*	Emission
1,450	1,944	1,350	UCD	on request	IMO-T2
1,600	2,146	1,400	HD	287.9	IMO-T2
1,885	2,528	1,500	MD	on request	IMO-T2

*Average fuel consumption according to ISO, see page 6.
Specifications/data subject to change without prior notice.

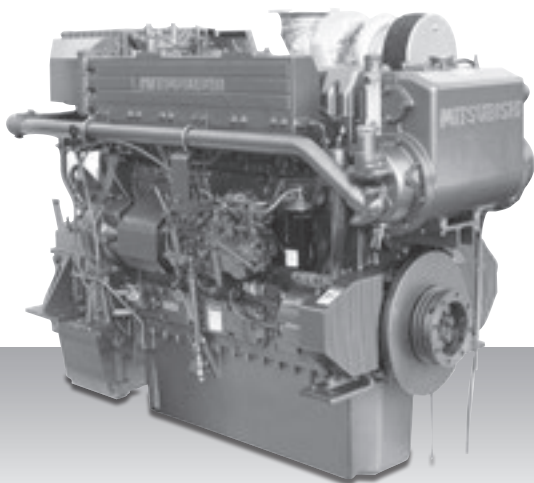
Product Dimensions & Dry Weight

L (mm) : 2,946
W (mm) : 1,525
H (mm) : 2,030
Dry Weight (kg) : 7,750

Dimensions and Weight are based on standard configuration.

Propulsion - IMO Tier II / CCNR-2 / EU-3A
High Speed - Propulsion Package

S6B3-T2MPTK



6-cylinder, 4-cycle, Water cooled, Diesel Engine
Direct-injection, Turbocharged with Air-cooler
Built-up Heat exchanger & Sea water pump.

Bore x Stroke (mm) : 135 x 170
Displacement (L) : 14.60

Commercial Rating

kW	BHP	RPM	Rating	Fuel Cons. L/hr*	Emission
378	507	2,001	HD	on request	IMO-T2
448	601	2,001	MD	77.9	IMO-T2

*Average fuel consumption according to ISO, see page 6.
Specifications/data subject to change without prior notice.

Product Dimensions & Dry Weight

L (mm) : 1,967
W (mm) : 984
H (mm) : 1,330
Dry Weight (kg) : 1,400

Dimensions and Weight are based on standard configuration.

Propulsion - IMO Tier II / CCNR-2 / EU-3A
High Speed - Propulsion Package

S6A3-T2MPTK3



6-cylinder, 4-cycle, Water cooled, Diesel Engine
Direct-injection, Turbocharged with Air-cooler
Built-up Heat exchanger & Sea water pump.

Bore x Stroke (mm) : 150 x 175
Displacement (L) : 18.50

Commercial Rating

kW	BHP	RPM	Rating	Fuel Cons. L/hr*	Emission
502	673	1,900	HD	on request	IMO-T2
558	748	1,900	MD	on request	IMO-T2

*Average fuel consumption according to ISO, see page 6.
Specifications/data subject to change without prior notice.

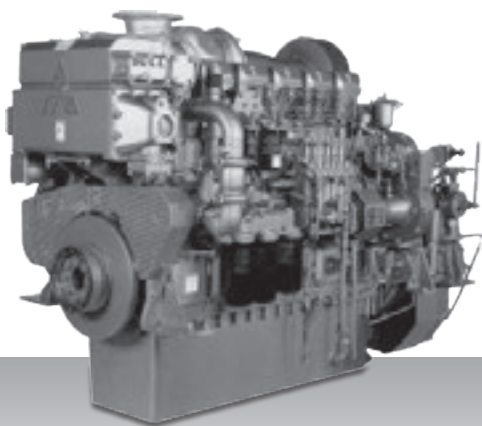
Product Dimensions & Dry Weight

L (mm) : 2,189
W (mm) : 1,127
H (mm) : 1,421
Dry Weight (kg) : 2,100

Dimensions and Weight are based on standard configuration.

Propulsion - IMO Tier II / CCNR-2 / EU-3A
High Speed - Propulsion Package

S6R-T2MPTK



6-cylinder, 4-cycle, Water cooled, Diesel Engine
Direct-injection, Turbocharged with Air-cooler
Built-up Heat exchanger & Sea water pump.

Bore x Stroke (mm) : 170 x 180
Displacement (L) : 24.51

Commercial Rating

kW	BHP	RPM	Rating	Fuel Cons. L/hr*	Emission
470	630	1,600	UCD	79.6	IMO-T2
520	697	1,650	HD	88.6	IMO-T2
605	811	1,800	MD	103.8	IMO-T2

*Average fuel consumption according to ISO, see page 6.
Specifications/data subject to change without prior notice.

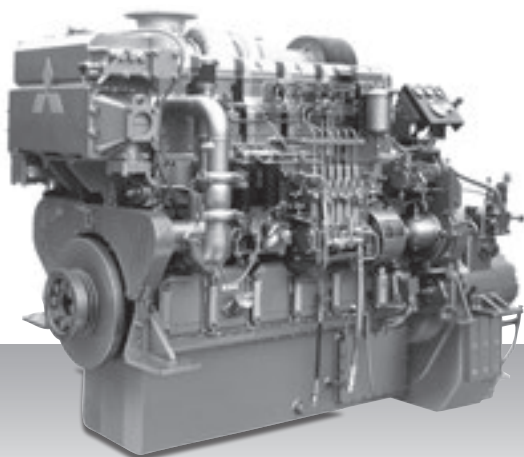
Product Dimensions & Dry Weight

L (mm) : 2,122
W (mm) : 1,202
H (mm) : 1,615
Dry Weight (kg) : 2,950

Dimensions and Weight are based on standard configuration.

Propulsion - IMO Tier II / CCNR-2 / EU-3A
High Speed - Propulsion Package

S6R2-T2MPTK3



6-cylinder, 4-cycle, Water cooled, Diesel Engine
Direct-injection, Turbocharged with Air-cooler
Built-up Heat exchanger & Sea water pump.

Bore x Stroke (mm) : 170 x 220
Displacement (L) : 29.96

Commercial Rating

kW	BHP	RPM	Rating	Fuel Cons. L/hr*	Emission
691	927	1,406	HD	112.7	IMO-T2
759	1,018	1,406	MD	122.3	IMO-T2

*Average fuel consumption according to ISO, see page 6.
Specifications/data subject to change without prior notice.

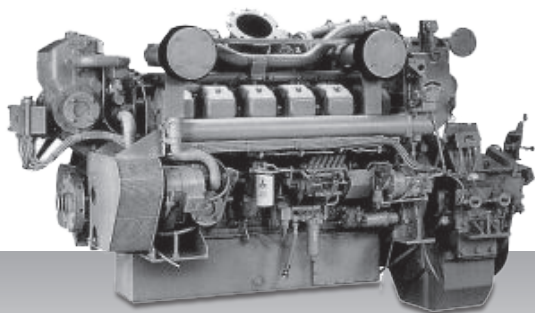
Product Dimensions & Dry Weight

L (mm) : 2,105
W (mm) : 1,183
H (mm) : 1,695
Dry Weight (kg) : 3,130

Dimensions and Weight are based on standard configuration.

Propulsion - IMO Tier II / CCNR-2 / EU-3A
High Speed - Propulsion Package

S12A2-T2MPTK



12-cylinder, 4-cycle, Water cooled, Diesel Engine
Direct-injection, Turbocharged with Air-cooler
Built-up Heat exchanger & Sea water pump.

Bore x Stroke (mm) : 150 x 160
Displacement (L) : 33.93

Commercial Rating

kW	BHP	RPM	Rating	Fuel Cons. L/hr*	Emission
701	940	1,800	UCD	121.9	IMO-T2
776	1,041	1,860	HD	134.4	IMO-T2
858	1,151	1,920	MD	150.1	IMO-T2

*Average fuel consumption according to ISO, see page 6.
Specifications/data subject to change without prior notice.

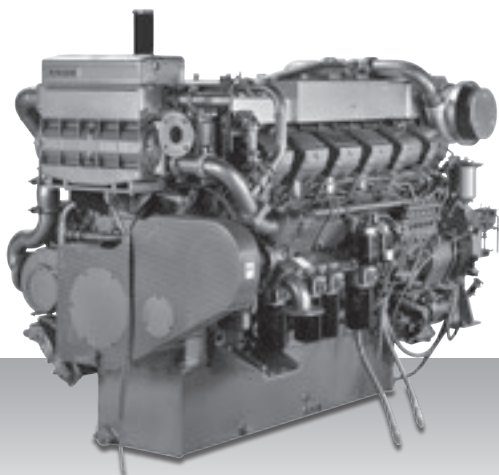
Product Dimensions & Dry Weight

L (mm) : 2,439
W (mm) : 1,482
H (mm) : 1,596
Dry Weight (kg) : 3,820

Dimensions and Weight are based on standard configuration.

Propulsion - IMO Tier II / CCNR-2 / EU-3A
High Speed - Propulsion Package

S12R-T2MPTK



12-cylinder, 4-cycle, Water cooled, Diesel Engine
Direct-injection, Turbocharged with Air-cooler
Built-up Heat exchanger & Sea water pump.

Bore x Stroke (mm) : 170 x 180
Displacement (L) : 49.03

Commercial Rating

kW	BHP	RPM	Rating	Fuel Cons. L/hr*	Emission
940	1,261	1,600	UCD	155.9	IMO-T2
1,040	1,395	1,650	HD	173.0	IMO-T2
1,210	1,623	1,800	MD	203.6	IMO-T2

*Average fuel consumption according to ISO, see page 6.
Specifications/data subject to change without prior notice.

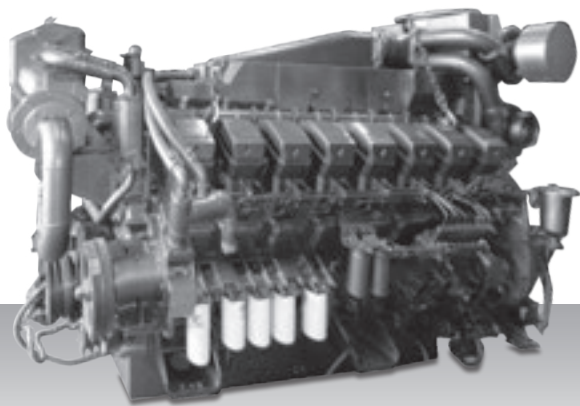
Product Dimensions & Dry Weight

L (mm) : 2,556
W (mm) : 1,622
H (mm) : 1,728
Dry Weight (kg) : 5,500

Dimensions and Weight are based on standard configuration.

Propulsion - IMO Tier II / CCNR-2 / EU-3A
High Speed - Propulsion Package

S16R-T2MPTK



16-cylinder, 4-cycle, Water cooled, Diesel Engine
Direct-injection, Turbocharged with Air-cooler
Built-up Heat exchanger & Sea water pump.

Bore x Stroke (mm) : 170 x 180
Displacement (L) : 65.37

Commercial Rating

kW	BHP	RPM	Rating	Fuel Cons. L/hr*	Emission
1,250	1,676	1,600	UCD	207.3	IMO-T2
1,380	1,851	1,650	HD	229.5	IMO-T2
1,610	2,159	1,800	MD	271.7	IMO-T2

*Average fuel consumption according to ISO, see page 6.
Specifications/data subject to change without prior notice.

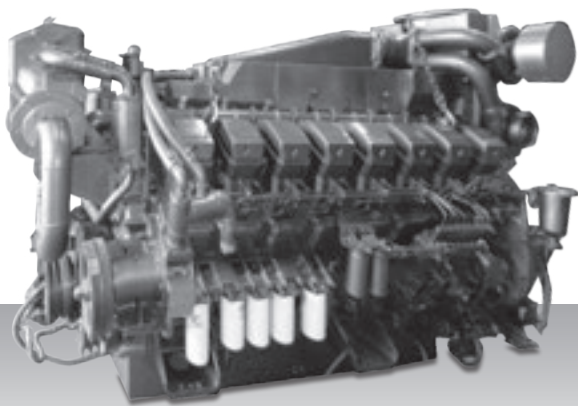
Product Dimensions & Dry Weight

L (mm) : 3,086
W (mm) : 1,622
H (mm) : 1,960
Dry Weight (kg) : 7,000

Dimensions and Weight are based on standard configuration.

Propulsion - IMO Tier II / CCNR-2 / EU-3A
High Speed - Propulsion Package

S16R2-T2MPTK



16-cylinder, 4-cycle, Water cooled, Diesel Engine
Direct-injection, Turbocharged with Air-cooler
Built-up Heat exchanger & Sea water pump.

Bore x Stroke (mm) : 170 x 220
Displacement (L) : 79.90

Commercial Rating

kW	BHP	RPM	Rating	Fuel Cons. L/hr*	Emission
1,450	1,944	1,350	UCD	on request	IMO-T2
1,600	2,156	1,400	HD	on request	IMO-T2
1,885	2,528	1,500	MD	on request	IMO-T2

*Average fuel consumption according to ISO, see page 6.
Specifications/data subject to change without prior notice.

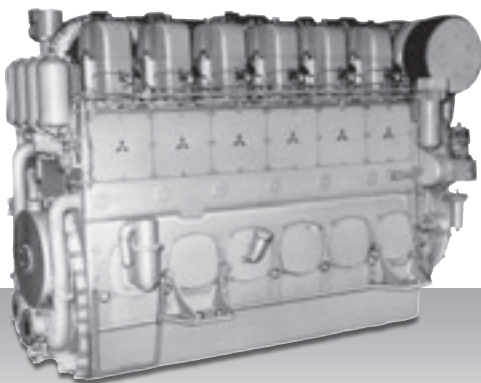
Product Dimensions & Dry Weight

L (mm) : 3,065
W (mm) : 1,622
H (mm) : 2,030
Dry Weight (kg) : 8,000

Dimensions and Weight are based on standard configuration.

Propulsion - IMO Tier II / CCNR-2
Medium Speed

S6U-C2MPTK



6-cylinder, 4-cycle, Water cooled, Diesel Engine
Direct-injection, Turbocharged with Air-cooler.

Bore x Stroke (mm) : 240 x 260
Displacement (L) : 70.57

Commercial Rating

kW	BHP	RPM	Rating	Fuel Cons. g/kWh*	Emission
680	912	1,100	UCD	on request	IMO-T2
719	964	1,100	UCD	on request	IMO-T2
749	1,004	1,100	UCD	on request	IMO-T2
1,007	1,350	1,060	UCD	200.0	IMO-T2 / CCNR-2
1,103	1,479	1,150	HT	200.0	IMO-T2 / CCNR-2
1,119	1,499	1,100	HD	200.0	IMO-T2 / CCNR-2

*Average fuel consumption according to ISO, see page 6.
Specifications/data subject to change without prior notice.

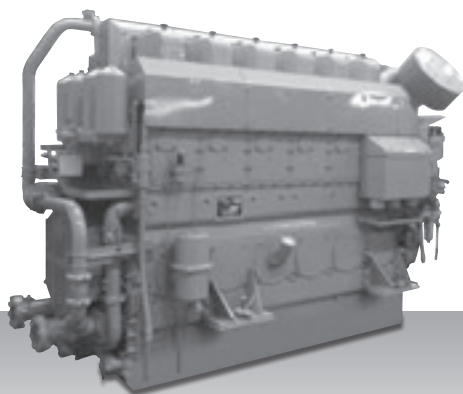
Product Dimensions & Dry Weight

L (mm) : 3,211
W (mm) : 1,429
H (mm) : 2,104
Dry Weight (kg) : 8,400

Dimensions and Weight are based on standard configuration.

Propulsion - IMO Tier II / CCNR-2
Medium Speed

S6U2-MPTK



6-cylinder, 4-cycle, Water cooled, Diesel Engine
Direct-injection, Turbocharged with Air-cooler

Bore x Stroke (mm) : 240 × 300
Displacement (L) : 81.43

Commercial Rating

kW	BHP	RPM	Rating	Fuel Cons. g/kWh*	Emission
1,040	1,395	930	UCD	194.0	IMO-T2 / CCNR-2
1,156	1,550	960	HD	194.0	IMO-T2 / CCNR-2

*Average fuel consumption according to ISO, see page 6.
Specifications/data subject to change without prior notice.

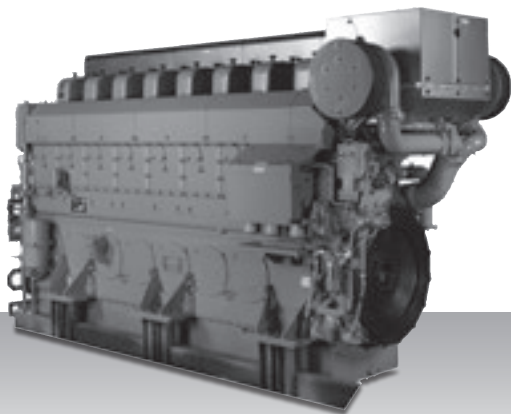
Product Dimensions & Dry Weight

L (mm) : 3,226
W (mm) : 1,429
H (mm) : 2,177
Dry Weight (kg) : 8,600

Dimensions and Weight are based on standard configuration.

Propulsion - IMO Tier II / CCNR-2
Medium Speed

S8U-C2MPTK



8-cylinder, 4-cycle, Water cooled, Diesel Engine
Direct-injection, Turbocharged with Air-cooler.

Bore x Stroke (mm) : 240 x 260
Displacement (L) : 94.10

Commercial Rating

kW	BHP	RPM	Rating	Fuel Cons. g/kWh*	Emission
1,343	1,801	1,060	UCD	204.0	IMO-T2 / CCNR-2
1,470	1,971	1,150	HT	204.0	IMO-T2 / CCNR-2
1,492	2,001	1,100	HD	204.0	IMO-T2 / CCNR-2

*Average fuel consumption according to ISO, see page 6.
Specifications/data subject to change without prior notice.

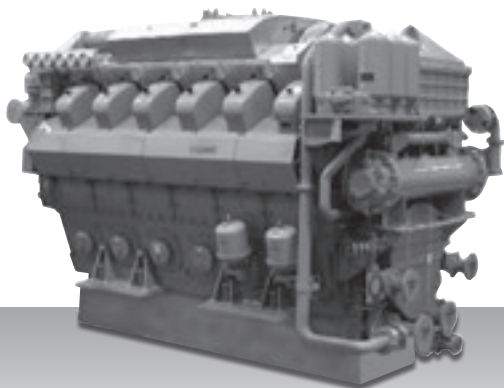
Product Dimensions & Dry Weight

L (mm) : 4,065
W (mm) : 1,539
H (mm) : 2,192
Dry Weight (kg) : 11,000

Dimensions and Weight are based on standard configuration.

Propulsion - IMO Tier II / CCNR-2
Medium Speed

S12U-MPTK



12-cylinder, 4-cycle, Water cooled, Diesel Engine
Direct-injection, Turbocharged with Air-cooler.

Bore x Stroke (mm) : 240 x 260
Displacement (L) : 141.15

Commercial Rating

kW	BHP	RPM	Rating	Fuel Cons. g/kWh*	Emission
2,014	2,701	1,060	UCD	200.0	IMO-T2
2,205	2,957	1,150	HT	200.0	IMO-T2
2,238	3,001	1,100	HD	200.0	IMO-T2

*Average fuel consumption according to ISO, see page 6.
Specifications/data subject to change without prior notice.

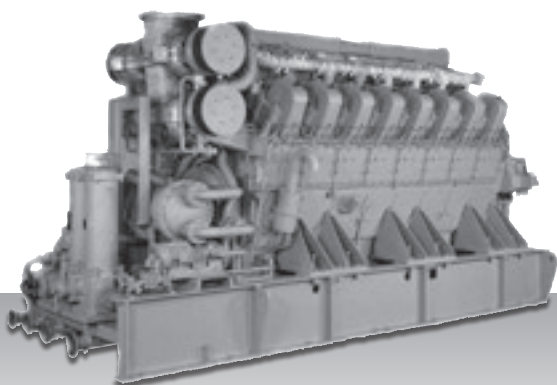
Product Dimensions & Dry Weight

L (mm) : 3,562
W (mm) : 1,910
H (mm) : 2,374
Dry Weight (kg) : 16,600

Dimensions and Weight are based on standard configuration.

Propulsion - IMO Tier II / CCNR-2
Medium Speed

S16U-C2MPTK



16-cylinder, 4-cycle, Water cooled, Diesel Engine
Direct-injection, Turbocharged with Air-cooler.

Bore x Stroke (mm) : 240 x 260
Displacement (L) : 188.19

Commercial Rating

kW	BHP	RPM	Rating	Fuel Cons. g/kWh*	Emission
2,686	3,602	1,060	UCD	204.0	IMO-T2
2,940	3,943	1,150	HT	204.0	IMO-T2
2,984	4,002	1,100	HD	204.0	IMO-T2

*Average fuel consumption according to ISO, see page 6.
Specifications/data subject to change without prior notice.

Product Dimensions & Dry Weight

L (mm) : 4,628
W (mm) : 1,710
H (mm) : 2,473
Dry Weight (kg) : 20,500

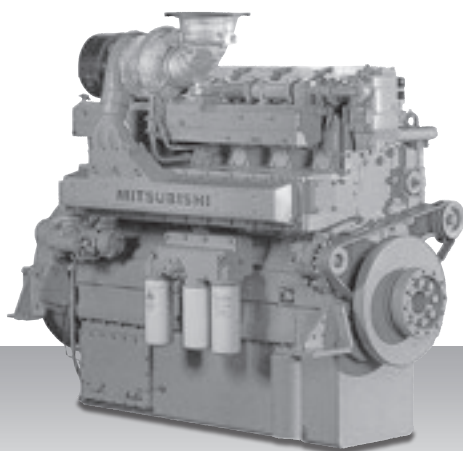
Dimensions and Weight are based on standard configuration.



Diesel-Electric Propulsion Specifications

**Diesel-Electric Propulsion - IMO Tier II
High Speed**

S6R-MPTAW



6-cylinder, 4-cycle, Water cooled, Diesel Engine
Direct-injection, Turbocharged with Air-cooler.

Bore x Stroke (mm) : 170 x 180
Displacement (L) : 24.51

Commercial Rating

kW	BHP	RPM	Hz	Fuel Cons. L/hr*	Emission
545	731	1,500	50	65.1	IMO-T2
577	774	1800	60	on request	IMO-T2

*Average fuel consumption according to ISO, see page 6.
Specifications/data subject to change without prior notice.

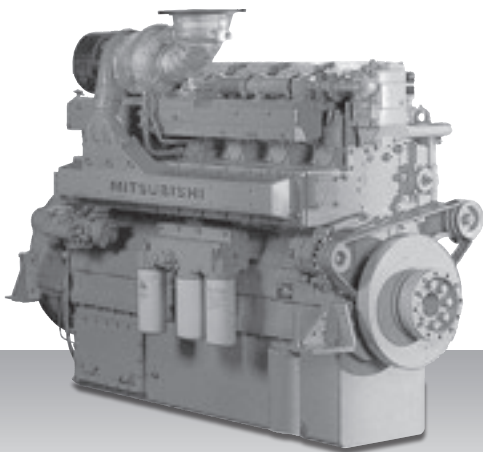
Product Dimensions & Dry Weight

L (mm) : 1,786
W (mm) : 1,220
H (mm) : 1,650
Dry Weight (kg) : 2,913

Dimensions and Weight are based on standard configuration.

**Diesel-Electric Propulsion - IMO Tier II
High Speed**

S6R2-T2MPTK



6-cylinder, 4-cycle, Water cooled, Diesel Engine
Direct-injection, Turbocharged with Air-cooler.

Bore x Stroke (mm) : 170 x 220
Displacement (L) : 29.96

Commercial Rating

kW	BHP	RPM	Hz	Fuel Cons. L/hr*	Emission
640	858	1,500	50	78.4	IMO-T2
500	671	1,200	60	58.6	IMO-T2

*Average fuel consumption according to ISO, see page 6.
Specifications/data subject to change without prior notice.

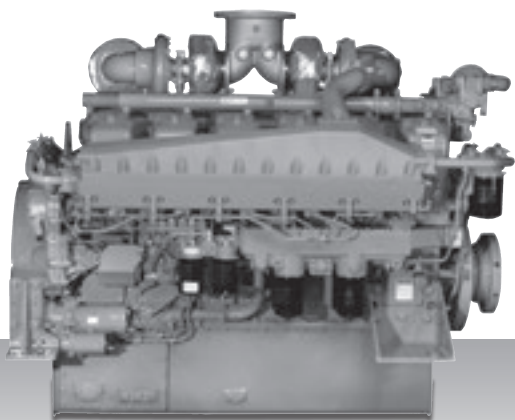
Product Dimensions & Dry Weight

L (mm) : 1,811
W (mm) : 1,108
H (mm) : 1,694
Dry Weight (kg) : 2,960

Dimensions and Weight are based on standard configuration.

**Diesel-Electric Propulsion - IMO Tier II
High Speed**

S12A2-MPTAW



12-cylinder, 4-cycle, Water cooled, Diesel Engine
Direct-injection, Turbocharged with Air-cooler.

Bore x Stroke (mm) : 150 x 160
Displacement (L) : 33.93

Commercial Rating

kW	BHP	RPM	Hz	Fuel Cons. L/hr*	Emission
709	951	1,500	50	85.0	IMO-T2
752	1,008	1,800	60	on request	IMO-T2

*Average fuel consumption according to ISO, see page 6.
Specifications/data subject to change without prior notice.

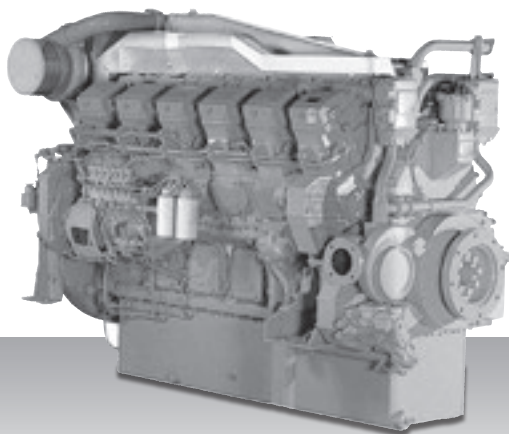
Product Dimensions & Dry Weight

L (mm) : 2,059
W (mm) : 1,654
H (mm) : 1,596
Dry Weight (kg) : 3,840

Dimensions and Weight are based on standard configuration.

Diesel-Electric Propulsion - IMO Tier II
High Speed

S12R-MPTAW



12-cylinder, 4-cycle, Water cooled, Diesel Engine
Direct-injection, Turbocharged with Air-cooler.

Bore x Stroke (mm) : 170 x 180
Displacement (L) : 49.03

Commercial Rating

kW	BHP	RPM	Hz	Fuel Cons. L/hr*	Emission
840	1,126	1,200	60	on request	IMO-T2
1,120	1,502	1,500	50	on request	IMO-T2
1,154	1,548	1,800	60	on request	IMO-T2

*Average fuel consumption according to ISO, see page 6.
Specifications/data subject to change without prior notice.

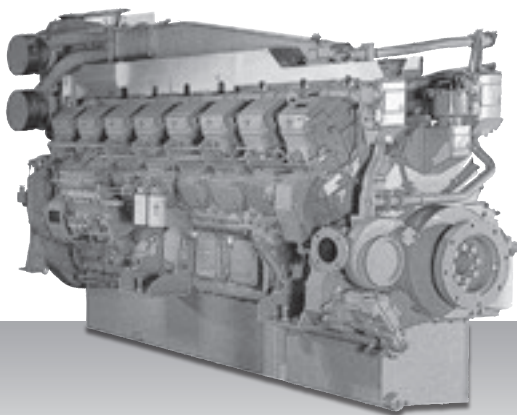
Product Dimensions & Dry Weight

L (mm) : 2,416
W (mm) : 1,585
H (mm) : 1,807
Dry Weight (kg) : 5,470

Dimensions and Weight are based on standard configuration.

Diesel-Electric Propulsion - IMO Tier II
High Speed

S16R-MPTAW



16-cylinder, 4-cycle, Water cooled, Diesel Engine
Direct-injection, Turbocharged with Air-cooler.

Bore x Stroke (mm) : 170 x 180
Displacement (L) : 65.37

Commercial Rating

kW	BHP	RPM	Hz	Fuel Cons. L/hr*	Emission
1,500	2,012	1,500	50	on request	IMO-T2
1,536	2,060	1,800	60	on request	IMO-T2
1,120	1,502	1,200	60	on request	IMO-T2

*Average fuel consumption according to ISO, see page 6.
Specifications/data subject to change without prior notice.

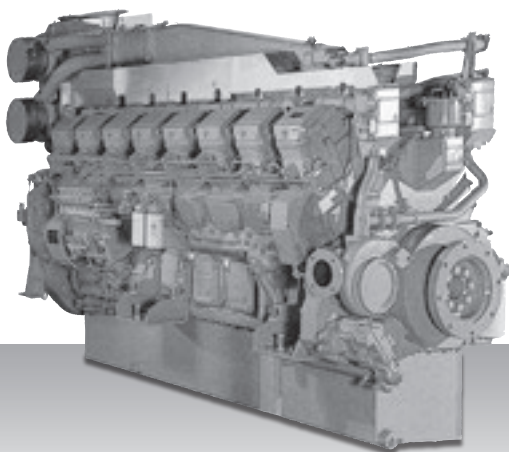
Product Dimensions & Dry Weight

L (mm) : 2,971
W (mm) : 1,585
H (mm) : 1,960
Dry Weight (kg) : 6,950

Dimensions and Weight are based on standard configuration.

**Diesel-Electric Propulsion - IMO - Tier II
High Speed**

S16R2-T2MPTAW



16-cylinder, 4-cycle, Water cooled, Diesel Engine
Direct-injection, Turbocharged with Air-cooler.

Bore x Stroke (mm) : 170 x 220
Displacement (L) : 79,90

Commercial Rating

kW	BHP	RPM	Hz	Fuel Cons. L/hr*	Emission
1,960	2,628	1,500	50	360.6	IMO-T2
1,568	2,103	1,200	60	284.5	IMO-T2

*Average fuel consumption according to ISO, see page 6.
Specifications/data subject to change without prior notice.

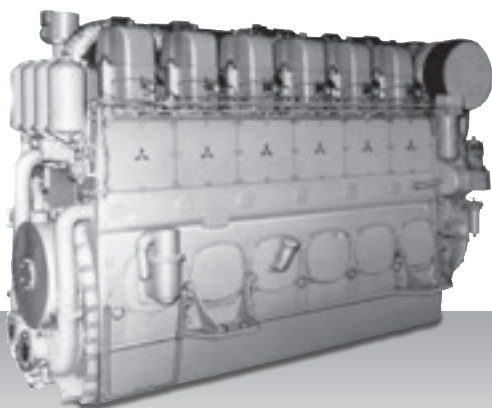
Product Dimensions & Dry Weight

L (mm) : 2,946
W (mm) : 1,525
H (mm) : 2,030
Dry Weight (kg) : 7,750

Dimensions and Weight are based on standard configuration.

**Diesel-Electric Propulsion - IMO Tier II
Medium Speed**

S6U-MPTK



6-cylinder, 4-cycle, Water cooled, Diesel Engine
Direct-injection, Turbocharged with Air-cooler.

Bore x Stroke (mm) : 240 x 260

Displacement (L) : 70.57

Commercial Rating

Operation	kW	BHP	RPM	Hz	Emission
Continuous	1,045	1,401	900	60	IMO-T2
	1,142	1,531	1,000	50	IMO-T2
	1,205	1,616	1,200	60	IMO-T2
Intermittent	1,150	1,542	900	60	IMO-T2
	1,270	1,703	1,000	50	IMO-T2
	1,343	1,801	1,200	60	IMO-T2

*Average fuel consumption according to ISO, see page 6.
Specifications/data subject to change without prior notice.

Product Dimensions & Dry Weight

L (mm) : 3,211

W (mm) : 1,429

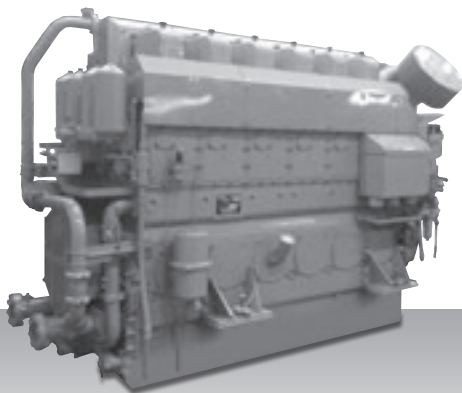
H (mm) : 2,104

Dry Weight (kg) : 8,400

Dimensions and Weight are based on standard configuration.

**Diesel-Electric Propulsion - IMO Tier II
Medium Speed**

S6U2-MPTK



6-cylinder, 4-cycle, Water cooled, Diesel Engine
Direct-injection, Turbocharged with Air-cooler.

Bore x Stroke (mm) : 240 x 300

Displacement (L) : 81.43

Commercial Rating

Operation	kW	BHP	RPM	Hz	Emission
Continuous	1,161	1,557	900	60	IMO-T2
	1,234	1,655	1,000	50	IMO-T2
Intermittent	1,250	1,676	900	60	IMO-T2
	1,363	1,828	1,000	50	IMO-T2

*Average fuel consumption according to ISO, see page 6.
Specifications/data subject to change without prior notice.

Product Dimensions & Dry Weight

L (mm) : 3,226

W (mm) : 1,429

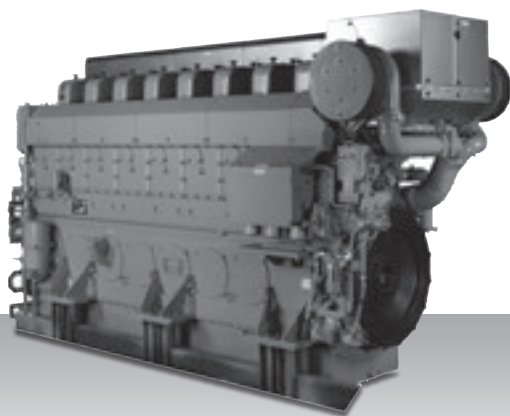
H (mm) : 2,177

Dry Weight (kg) : 8,600

Dimensions and Weight are based on standard configuration.

Diesel-Electric Propulsion - IMO Tier II
Medium Speed

S8U-MPTK



8-cylinder, 4-cycle, Water cooled, Diesel Engine
Direct-injection, Turbocharged with Air-cooler.

Bore x Stroke (mm) : 240 x 260

Displacement (L) : 94.10

Commercial Rating

Operation	kW	BHP	RPM	Hz	Emission
Continuous	1,394	1,869	900	60	IMO-T2
	1,522	2,041	1,000	50	IMO-T2
	1,608	2,156	1,200	60	IMO-T2
Intermittent	1,533	2,056	900	60	IMO-T2
	1,693	2,270	1,000	50	IMO-T2
	1,790	2,400	1,200	60	IMO-T2

*Average fuel consumption according to ISO, see page 6.
Specifications/data subject to change without prior notice.

Product Dimensions & Dry Weight

L (mm) : 4,065

W (mm) : 1,539

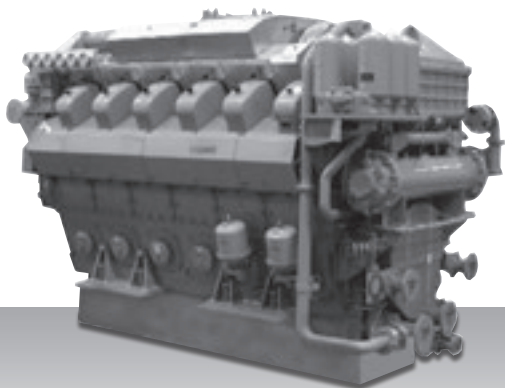
H (mm) : 2,192

Dry Weight (kg) : 11,000

Dimensions and Weight are based on standard configuration.

**Diesel-Electric Propulsion - IMO Tier II
Medium Speed**

S12U-MPTK



12-cylinder, 4-cycle, Water cooled, Diesel Engine
Direct-injection, Turbocharged with Air-cooler.

Bore x Stroke (mm) : 240 x 260

Displacement (L) : 141.15

Commercial Rating

Operation	kW	BHP	RPM	Hz	Emission
Continuous	2,090	2,803	900	60	IMO-T2
	2,283	3,062	1,000	50	IMO-T2
	2,412	3,235	1,200	60	IMO-T2
Intermittent	2,299	3,083	900	60	IMO-T2
	2,541	3,408	1,000	50	IMO-T2
	2,685	3,601	1,200	60	IMO-T2

*Average fuel consumption according to ISO, see page 6.
Specifications/data subject to change without prior notice.

Product Dimensions & Dry Weight

L (mm) : 3,562

W (mm) : 1,910

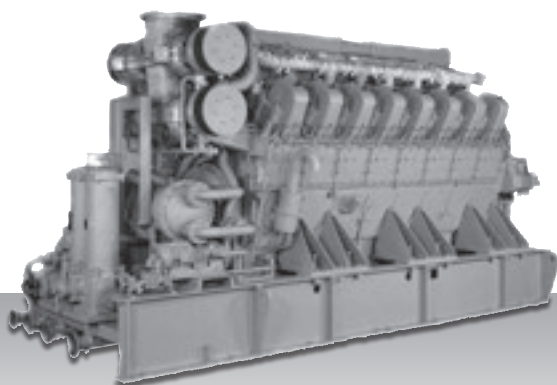
H (mm) : 2,374

Dry Weight (kg) : 16,600

Dimensions and Weight are based on standard configuration.

**Diesel-Electric Propulsion - IMO Tier II
Medium Speed**

S16U-MPTK



16-cylinder, 4-cycle, Water cooled, Diesel Engine
Direct-injection, Turbocharged with Air-cooler.

Bore x Stroke (mm) : 240 x 260

Displacement (L) : 188.19

Commercial Rating

Operation	kW	BHP	RPM	Hz	Emission
Continuous	2,787	3,737	900	60	IMO-T2
	3,045	4,083	1,000	50	IMO-T2
	3,215	4,311	1,200	60	IMO-T2
Intermittent	3,065	4,110	900	60	IMO-T2
	3,388	4,543	1,000	50	IMO-T2
	3,580	4,801	1,200	60	IMO-T2

*Average fuel consumption according to ISO, see page 6.
Specifications/data subject to change without prior notice.

Product Dimensions & Dry Weight

L (mm) : 4,628

W (mm) : 1,710

H (mm) : 2,473

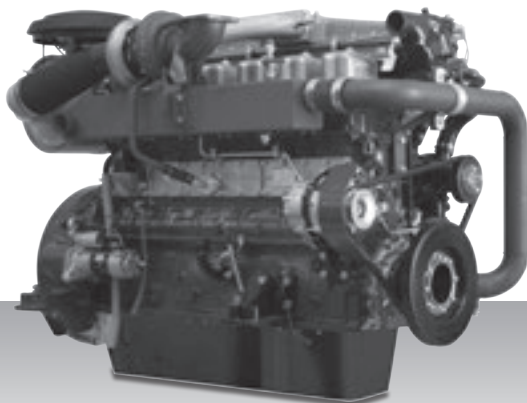
Dry Weight (kg) : 20,500

Dimensions and Weight are based on standard configuration.

Auxiliary Generator Specifications

Auxiliary Generator -
IMO Tier I / Non Emission - High Speed

6D16-T



6-cylinder, 4-cycle, Water cooled, Diesel Engine
Direct-injection, Turbocharged with Air-cooler.

Bore x Stroke (mm) : 118 x 115
Displacement (L) : 7.54

Commercial Rating

kW	BHP	RPM	Hz	Fuel Cons. L/hr*	Emission
106	142	1,500	50	17.9	Not Regulated
129	173	1,800	60	on request	Not Regulated

*Average fuel consumption according to ISO, see page 6.
Specifications/data subject to change without prior notice.

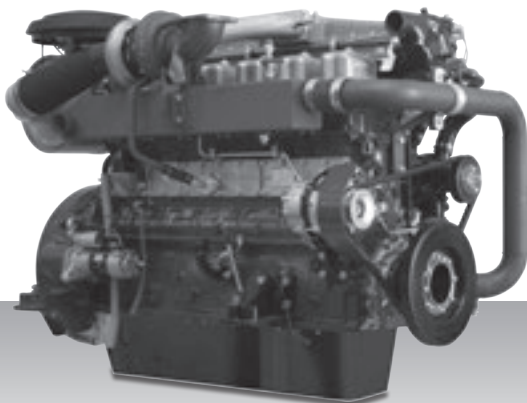
Product Dimensions & Dry Weight

L (mm) : 1,335
W (mm) : 731
H (mm) : 830
Dry Weight (kg) : 575

Dimensions and Weight are based on standard configuration.

**Auxiliary Generator -
IMO Tier I / Non Emission - High Speed**

6D24-T(C)



6-cylinder, 4-cycle, Water cooled, Diesel Engine
Direct-injection, Turbocharged with Air-cooler.

Bore x Stroke (mm) : 130 x 150
Displacement (L) : 11.95

Commercial Rating

kW	BHP	RPM	Hz	Fuel Cons. L/hr*	Emission
169	227	1,500	50	on request	Non Emission
181	243	1,500	50	25.5	IMO-T1
195	262	1,800	60	on request	Non Emission
218	292	1,800	60	30.9	IMO-T1

*Average fuel consumption according to ISO, see page 6.
Specifications/data subject to change without prior notice.

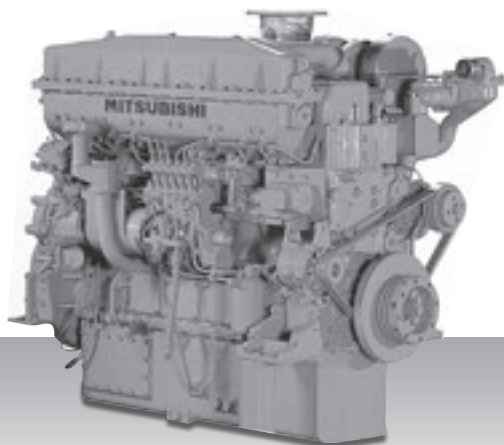
Product Dimensions & Dry Weight

L (mm) : 1,535
W (mm) : 880
H (mm) : 1,235
Dry Weight (kg) : 1,209

Dimensions and Weight are based on standard configuration.

Auxiliary Generator -
IMO Tier I / Non Emission - High Speed

S6B3-MPTA



6-cylinder, 4-cycle, Water cooled, Diesel Engine
Direct-injection, Turbocharged with Air-cooler.

Bore x Stroke (mm) : 135 x 170
Displacement (L) : 14.60

Commercial Rating

kW	BHP	RPM	Hz	Fuel Cons. L/hr*	Emission
335	449	1,500	50	on request	IMO-T1
375	503	1,800	60	on request	IMO-T1

*Average fuel consumption according to ISO, see page 6.
Specifications/data subject to change without prior notice.

Product Dimensions & Dry Weight

L (mm) : 1,834
W (mm) : 873
H (mm) : 1,331
Dry Weight (kg) : 1,300

Dimensions and Weight are based on standard configuration.

**Auxiliary Generator -
IMO Tier I / Non Emission - High Speed**

S6A3-MPTA



6-cylinder, 4-cycle, Water cooled, Diesel Engine
Direct-injection, Turbocharged with Air-cooler.

Bore x Stroke (mm) : 150 x 175
Displacement (L) : 18.56

Commercial Rating

kW	BHP	RPM	Hz	Fuel Cons. L/hr*	Emission
400	536	1,500	50	49.4	IMO-T1
460	617	1,800	60	57.8	IMO-T1

*Average fuel consumption according to ISO, see page 6.
Specifications/data subject to change without prior notice.

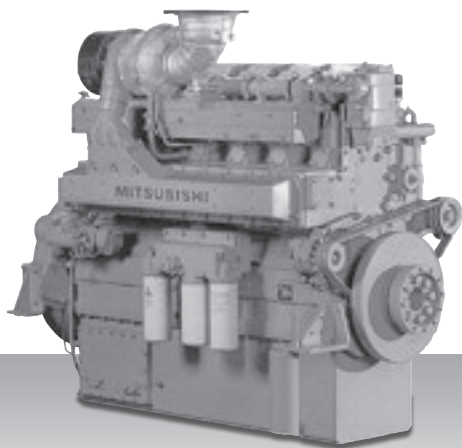
Product Dimensions & Dry Weight

L (mm) : 1,636
W (mm) : 924
H (mm) : 1,421
Dry Weight (kg) : 1,850

Dimensions and Weight are based on standard configuration.

Auxiliary Generator -
IMO Tier I / Non Emission - High Speed

S6R-MPTA



6-cylinder, 4-cycle, Water cooled, Diesel Engine
Direct-injection, Turbocharged with Air-cooler.

Bore x Stroke (mm) : 170 x 180
Displacement (L) : 24.51

Commercial Rating

kW	BHP	RPM	Hz	Fuel Cons. L/hr*	Emission
515	691	1,500	50	64.4	IMO-T1
595	798	1,800	60	77.9	IMO-T1

*Average fuel consumption according to ISO, see page 6.
Specifications/data subject to change without prior notice.

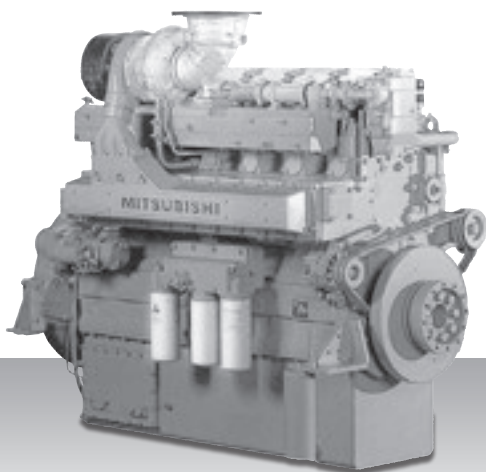
Product Dimensions & Dry Weight

L (mm) : 1,811
W (mm) : 1,108
H (mm) : 1,614
Dry Weight (kg) : 2,780

Dimensions and Weight are based on standard configuration.

**Auxiliary Generator -
IMO Tier I / Non Emission - High Speed**

S6R2-MPTA



6-cylinder, 4-cycle, Water cooled, Diesel Engine
Direct-injection, Turbocharged with Air-cooler.

Bore x Stroke (mm) : 170 x 220
Displacement (L) : 29.96

Commercial Rating

kW	BHP	RPM	Hz	Fuel Cons. L/hr*	Emission
595	798	1,500	50	77.9	IMO-T1
485	650	1,200	60	57.9	IMO-T1

*Average fuel consumption according to ISO, see page 6.
Specifications/data subject to change without prior notice.

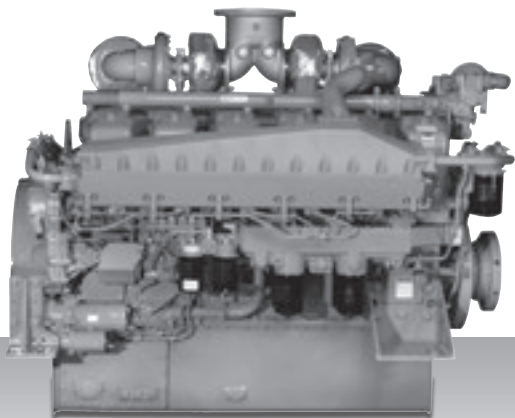
Product Dimensions & Dry Weight

L (mm) : 1,811
W (mm) : 1,108
H (mm) : 1,694
Dry Weight (kg) : 2,910

Dimensions and Weight are based on standard configuration.

Auxiliary Generator -
IMO Tier I / Non Emission - High Speed

S12A2-MPTA



12-cylinder, 4-cycle, Water cooled, Diesel Engine
Direct-injection, Turbocharged with Air-cooler.

Bore x Stroke (mm) : 150 x 160
Displacement (L) : 33.93

Commercial Rating

kW	BHP	RPM	Hz	Fuel Cons. L/hr*	Emission
679	911	1,500	50	83.0	IMO-T1
761	1,021	1,800	60	97.5	IMO-T1

*Average fuel consumption according to ISO, see page 6.
Specifications/data subject to change without prior notice.

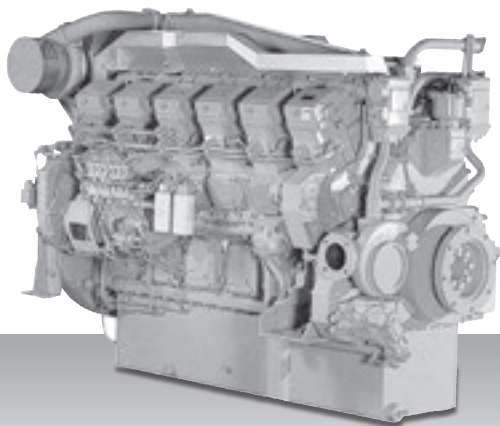
Product Dimensions & Dry Weight

L (mm) : 2,002
W (mm) : 1,442
H (mm) : 1,596
Dry Weight (kg) : 3,380

Dimensions and Weight are based on standard configuration.

**Auxiliary Generator -
IMO Tier I / Non Emission - High Speed**

S12R-MPTA



12-cylinder, 4-cycle, Water cooled, Diesel Engine
Direct-injection, Turbocharged with Air-cooler.

Bore x Stroke (mm) : 170 x 180
Displacement (L) : 49.03

Commercial Rating

kW	BHP	RPM	Hz	Fuel Cons. L/hr*	Emission
1,110	1,489	1,500	50	136.6	IMO-T1
1,190	1,596	1,800	60	155.2	IMO-T1

*Average fuel consumption according to ISO, see page 6.
Specifications/data subject to change without prior notice.

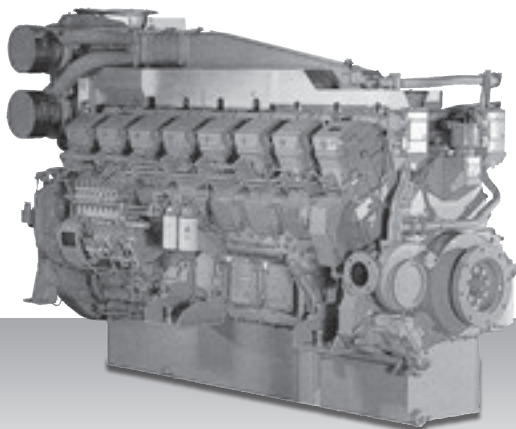
Product Dimensions & Dry Weight

L (mm) : 2,376
W (mm) : 1,512
H (mm) : 1,742
Dry Weight (kg) : 5,230

Dimensions and Weight are based on standard configuration.

Auxiliary Generator -
IMO Tier I / Non Emission - High Speed

S16R-MPTA



16-cylinder, 4-cycle, Water cooled, Diesel Engine
Direct-injection, Turbocharged with Air-cooler.

Bore x Stroke (mm) : 170 x 180
Displacement (L) : 65.37

Commercial Rating

kW	BHP	RPM	Hz	Fuel Cons. L/hr*	Emission
1,480	1,985	1,500	50	177.9	IMO-T1
1,590	2,132	1,800	60	200.9	IMO-T1

*Average fuel consumption according to ISO, see page 6.
Specifications/data subject to change without prior notice.

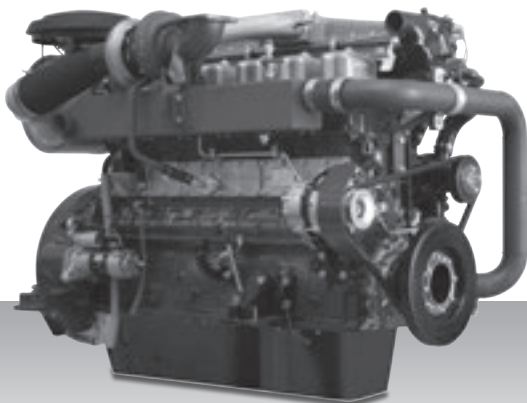
Product Dimensions & Dry Weight

L (mm) : 2,931
W (mm) : 1,512
H (mm) : 1,960
Dry Weight (kg) : 6,660

Dimensions and Weight are based on standard configuration.

Auxiliary Generator -
IMO Tier II / CCR-2 / EU-3A - High Speed

6D16-T



6-cylinder, 4-cycle, Water cooled, Diesel Engine
Direct-injection, Turbocharged with Air-cooler.

Bore x Stroke (mm) : 118 x 115
Displacement (L) : 7.54

Commercial Rating

kW	BHP	RPM	Hz	Fuel Cons. L/hr*	Emission
106	142	1,500	50	17.9	Not Regulated
129	173	1,800	60	on request	Not Regulated

*Average fuel consumption according to ISO, see page 6.
Specifications/data subject to change without prior notice.

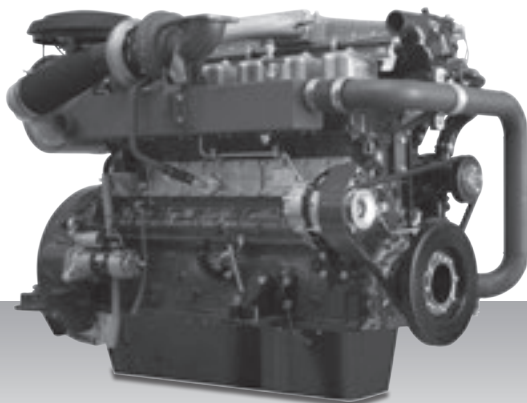
Product Dimensions & Dry Weight

L (mm) : 1,335
W (mm) : 731
H (mm) : 830
Dry Weight (kg) : 575

Dimensions and Weight are based on standard configuration.

Auxiliary Generator -
IMO Tier II / CCR-2 / EU-3A - High Speed

6D24-TC



6-cylinder, 4-cycle, Water cooled, Diesel Engine
Direct-injection, Turbocharged with Air-cooler.

Bore x Stroke (mm) : 118 x 115
Displacement (L) : 7.54

Commercial Rating

kW	BHP	RPM	Hz	Fuel Cons. L/hr*	Emission
181	243	1,500	50	25.5	IMO-T2
218	292	1,800	60	30.9	IMO-T2

*Average fuel consumption according to ISO, see page 6.
Specifications/data subject to change without prior notice.

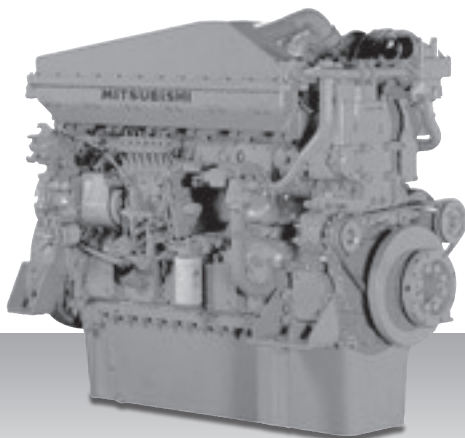
Product Dimensions & Dry Weight

L (mm) : 1,535
W (mm) : 880
H (mm) : 1,235
Dry Weight (kg) : 575

Dimensions and Weight are based on standard configuration.

Auxiliary Generator -
IMO Tier II / CCR-2 / EU-3A - High Speed

S6B3-T2MPTAW



6-cylinder, 4-cycle, Water cooled, Diesel Engine
Direct-injection, Turbocharged with Air-cooler.

Bore x Stroke (mm) : 135 x 170
Displacement (L) : 14.60

Commercial Rating

kW	BHP	RPM	Hz	Fuel Cons. L/hr*	Emission
335	449	1,500	50	45.7	IMO-T2
375	503	1,800	60	52.5	IMO-T2

*Average fuel consumption according to ISO, see page 6.
Specifications/data subject to change without prior notice.

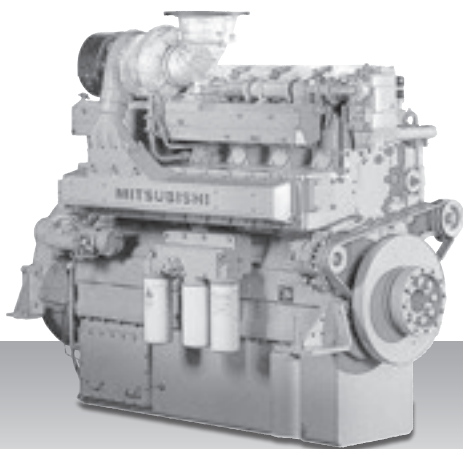
Product Dimensions & Dry Weight

L (mm) : 1,465
W (mm) : 873
H (mm) : 1,331
Dry Weight (kg) : 1,300

Dimensions and Weight are based on standard configuration.

Auxiliary Generator -
IMO Tier II / CCR-2 / EU-3A - High Speed

S6R-(Z3)MPTAW



6-cylinder, 4-cycle, Water cooled, Diesel Engine
Direct-injection, Turbocharged with Air-cooler.

Bore x Stroke (mm) : 170 x 180
Displacement (L) : 24.51

Commercial Rating

kW	BHP	RPM	Hz	Fuel Cons. L/hr*	Emission
545	731	1,500	50	on request	IMO-T2
635	852	1,800	60	82.4	IMO-T2 / EU-3A

*Average fuel consumption according to ISO, see page 6.
Specifications/data subject to change without prior notice.

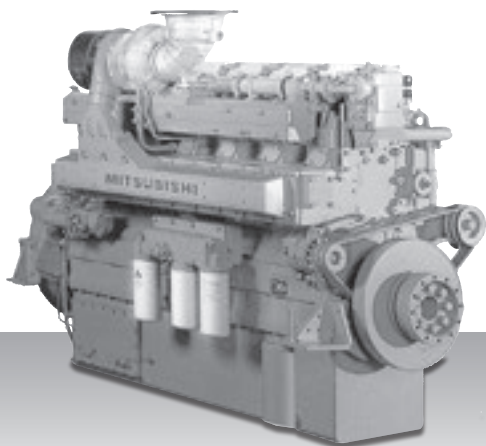
Product Dimensions & Dry Weight

L (mm) : 1,786
W (mm) : 1,220
H (mm) : 1,650
Dry Weight (kg) : 2,913

Dimensions and Weight are based on standard configuration.

Auxiliary Generator -
IMO Tier II / CCR-2 / EU-3A - High Speed

S6R2-T2MPTK



6-cylinder, 4-cycle, Water cooled, Diesel Engine
Direct-injection, Turbocharged with Air-cooler.

Bore x Stroke (mm) : 170 x 220
Displacement (L) : 29.96

Commercial Rating

kW	BHP	RPM	Hz	Fuel Cons. L/hr*	Emission
640	858	1,500	50	on request	IMO-T2
500	671	1,200	60	on request	IMO-T2

*Average fuel consumption according to ISO, see page 6.
Specifications/data subject to change without prior notice.

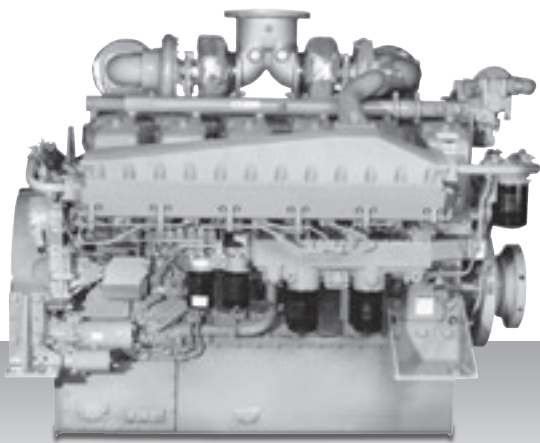
Product Dimensions & Dry Weight

L (mm) : 1,811
W (mm) : 1,108
H (mm) : 1,694
Dry Weight (kg) : 2,960

Dimensions and Weight are based on standard configuration.

Auxiliary Generator -
IMO Tier II / CCR-2 / EU-3A - High Speed

S12A2-MPTAW



12-cylinder, 4-cycle, Water cooled, Diesel Engine
Direct-injection, Turbocharged with Air-cooler.

Bore x Stroke (mm) : 150 x 160
Displacement (L) : 33.93

Commercial Rating

kW	BHP	RPM	Hz	Fuel Cons. L/hr*	Emission
709	951	1,500	50	on request	IMO-T2
828	1,110	1,800	60	102.0	IMO-T2

*Average fuel consumption according to ISO, see page 6.
Specifications/data subject to change without prior notice.

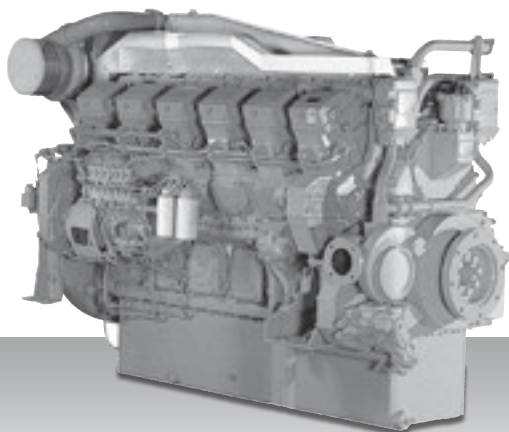
Product Dimensions & Dry Weight

L (mm) : 2,059
W (mm) : 1,654
H (mm) : 1,596
Dry Weight (kg) : 3,840

Dimensions and Weight are based on standard configuration.

Auxiliary Generator -
IMO Tier II / CCR-2 / EU-3A - High Speed

S12R-MPTAW



12-cylinder, 4-cycle, Water cooled, Diesel Engine
Direct-injection, Turbocharged with Air-cooler.

Bore x Stroke (mm) : 170 x 180
Displacement (L) : 49.03

Commercial Rating

kW	BHP	RPM	Hz	Fuel Cons. L/hr*	Emission
1,120	1,502	1,500	50	124.0	IMO-T2
840	1,126	1,200	60	95.6	IMO-T2
1,270	1,703	1,800	60	163.6	IMO-T2

*Average fuel consumption according to ISO, see page 6.
Specifications/data subject to change without prior notice.

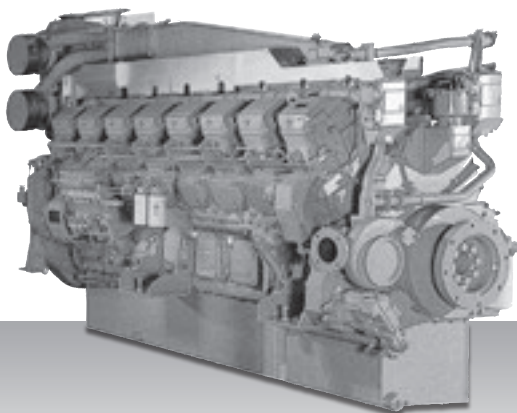
Product Dimensions & Dry Weight

L (mm) : 2,416
W (mm) : 1,585
H (mm) : 1,807
Dry Weight (kg) : 5,470

Dimensions and Weight are based on standard configuration.

Auxiliary Generator -
IMO Tier II / CCR-2 / EU-3A - High Speed

S16R-MPTAW



16-cylinder, 4-cycle, Water cooled, Diesel Engine
Direct-injection, Turbocharged with Air-cooler.

Bore x Stroke (mm) : 170 x 180
Displacement (L) : 65.37

Commercial Rating

kW	BHP	RPM	Hz	Fuel Cons. L/hr*	Emission
1,500	2,012	1,500	50	182.6	IMO-T2
1,120	1,502	1,200	60	on request	IMO-T2
1,690	2,266	1,800	60	211.9	IMO-T2

*Average fuel consumption according to ISO, see page 6.
Specifications/data subject to change without prior notice.

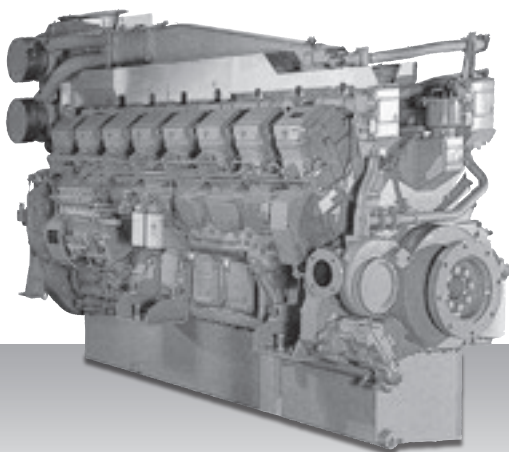
Product Dimensions & Dry Weight

L (mm) : 2,971
W (mm) : 1,585
H (mm) : 1,960
Dry Weight (kg) : 6,950

Dimensions and Weight are based on standard configuration.

Auxiliary Generator -
IMO Tier II /CCR-2 / EU-3A - High Speed

S16R2-T2MPTAW



16-cylinder, 4-cycle, Water cooled, Diesel Engine
Direct-injection, Turbocharged with Air-cooler.

Bore x Stroke (mm) : 170 x 220
Displacement (L) : 79,9

Commercial Rating

kW	BHP	RPM	Hz	Fuel Cons. L/hr*	Emission
1.960	2.628	1,500	50	on request	IMO-T2
1.568	2.103	1,200	60	on request	IMO-T2

*Average fuel consumption according to ISO, see page 6.
Specifications/data subject to change without prior notice.

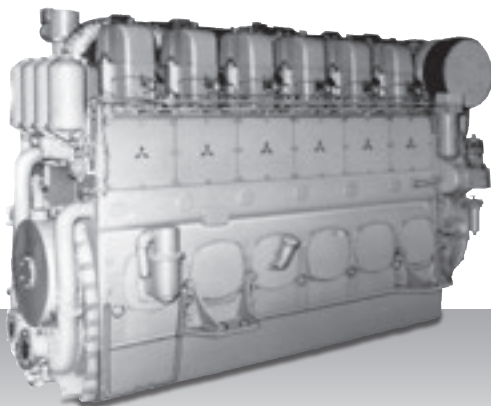
Product Dimensions & Dry Weight

L (mm) : 2,946
W (mm) : 1,525
H (mm) : 2,030
Dry Weight (kg) : 7,750

Dimensions and Weight are based on standard configuration.

Auxiliary Generator -
IMO Tier II - Medium Speed

S6U-MPTK



6-cylinder, 4-cycle, Water cooled, Diesel Engine
Direct-injection, Turbocharged with Air-cooler

Bore x Stroke (mm) : 240 x 260
Displacement (L) : 70.57

Commercial Rating

kW	BHP	RPM	Hz	Fuel Cons. g/kWh*	Emission
1,270	1,703	1,000	50	on request	IMO-T2
1,150	1,542	900	60	on request	IMO-T2
1,343	1,801	1,200	60	on request	IMO-T2

*Average fuel consumption according to ISO, see page 6.
Specifications/data subject to change without prior notice.

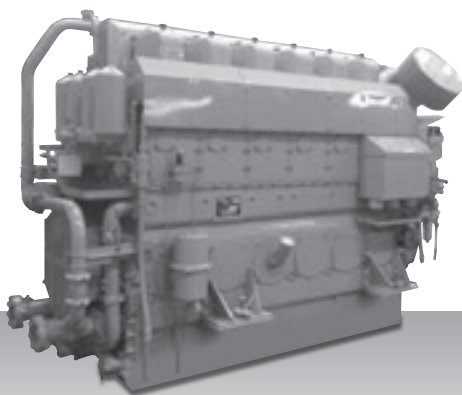
Product Dimensions & Dry Weight

L (mm) : 3,211
W (mm) : 1,429
H (mm) : 2,104
Dry Weight (kg) : 8,400

Dimensions and Weight are based on standard configuration.

Auxiliary Generator -
IMO Tier II - Medium Speed

S6U2-MPTK



6-cylinder, 4-cycle, Water cooled, Diesel Engine
Direct-injection, Turbocharged with Air-cooler.

Bore x Stroke (mm) : 240 x 300
Displacement (L) : 81.43

Commercial Rating

kW	BHP	RPM	Hz	Fuel Cons. g/kWh*	Emission
1,363	1,828	1,000	50	on request	IMO-T2
1,250	1,676	900	60	on request	IMO-T2

*Average fuel consumption according to ISO, see page 6.
Specifications/data subject to change without prior notice.

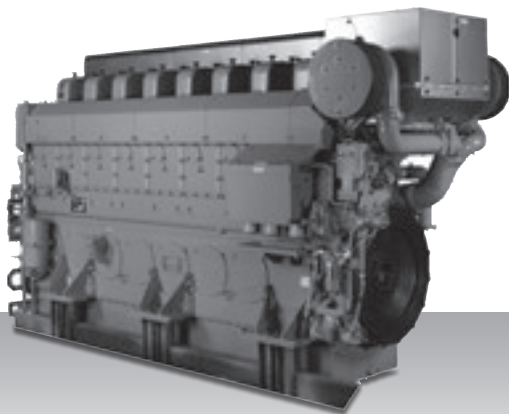
Product Dimensions & Dry Weight

L (mm) : 3,226
W (mm) : 1,429
H (mm) : 2,177
Dry Weight (kg) : 8,600

Dimensions and Weight are based on standard configuration.

Auxiliary Generator -
IMO Tier II - Medium Speed

S8U-MPTK



8-cylinder, 4-cycle, Water cooled, Diesel Engine
Direct-injection, Turbocharged with Air-cooler.

Bore x Stroke (mm) : 240 x 260
Displacement (L) : 94.10

Commercial Rating

kW	BHP	RPM	Hz	Fuel Cons. g/kWh*	Emission
1,693	2,270	1,000	50	on request	IMO-T2
1,533	2,056	900	60	on request	IMO-T2
1,790	2,400	1,200	60	on request	IMO-T2

*Average fuel consumption according to ISO, see page 6.
Specifications/data subject to change without prior notice.

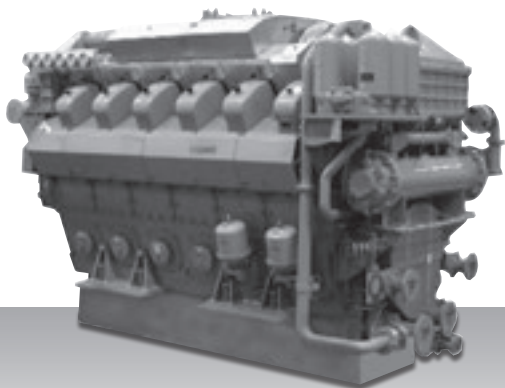
Product Dimensions & Dry Weight

L (mm) : 4,065
W (mm) : 1,539
H (mm) : 2,192
Dry Weight (kg) : 11,000

Dimensions and Weight are based on standard configuration.

Auxiliary Generator -
IMO Tier II - Medium Speed

S12U-MPTK



12-cylinder, 4-cycle, Water cooled, Diesel Engine
Direct-injection, Turbocharged with Air-cooler.

Bore x Stroke (mm) : 240 x 260
Displacement (L) : 141.15

Commercial Rating

kW	BHP	RPM	Hz	Fuel Cons. g/kWh*	Emission
2,541	3,408	1,000	50	on request	IMO-T2
2,299	3,083	900	60	on request	IMO-T2
2,685	3,601	1,200	60	on request	IMO-T2

*Average fuel consumption according to ISO, see page 6.
Specifications/data subject to change without prior notice.

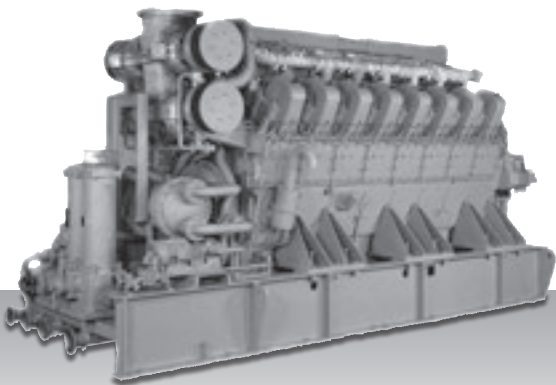
Product Dimensions & Dry Weight

L (mm) : 3,562
W (mm) : 1,910
H (mm) : 2,374
Dry Weight (kg) : 16,600

Dimensions and Weight are based on standard configuration.

Auxiliary Generator -
IMO Tier II - Medium Speed

S16U-MPTK



16-cylinder, 4-cycle, Water cooled, Diesel Engine
Direct-injection, Turbocharged with Air-cooler.

Bore x Stroke (mm) : 240 x 260
Displacement (L) : 188.19

Commercial Rating

kW	BHP	RPM	Hz	Fuel Cons. g/kWh*	Emission
3,388	4,543	1,000	50	on request	IMO-T2
3,065	4,110	900	60	on request	IMO-T2
3,580	4,801	1,200	60	on request	IMO-T2

*Average fuel consumption according to ISO, see page 6.
Specifications/data subject to change without prior notice.

Product Dimensions & Dry Weight

L (mm) : 4,628
W (mm) : 1,710
H (mm) : 2,473
Dry Weight (kg) : 20,500

Dimensions and Weight are based on standard configuration.

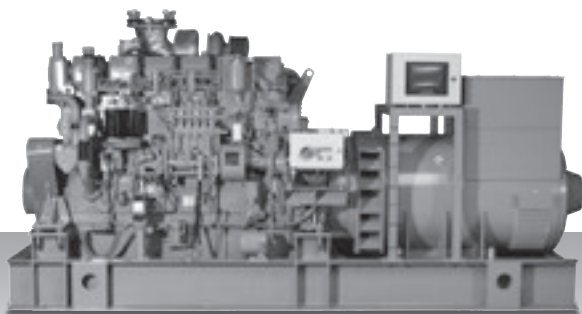
Generator Set Specifications

Mitsubishi Generator sets combine a Mitsubishi Diesel Engine with Europe's best alternators and a Mitsubishi monitoring system. They have double bearing, IP23 louvers, and a Voltage of 400 at 50 Hz or 440 at 60 Hz. They are designed to connect to a heat exchange or keel cooling system, and mounted on a steel frame with vibration dampers underneath.

Each Generator Set is designed and built according to the rules of the major classification societies.

Generator Set -
IMO Tier II / EU-3A

MAS 650-S



Engine Model S6R-(Z3)MPTAW

Commercial Rating

	kVA	kWe	RPM	Hz	Emission
Diesel-Electric Propulsion	652	522	1,500	50	IMO-T2
	684	548	1,800	60	IMO-T2
Auxiliary Generator	652	522	1,500	50	IMO-T2
	753	603	1,800	60	IMO-T2 / EU-3A

Specifications/ data subject to change without prior notice.

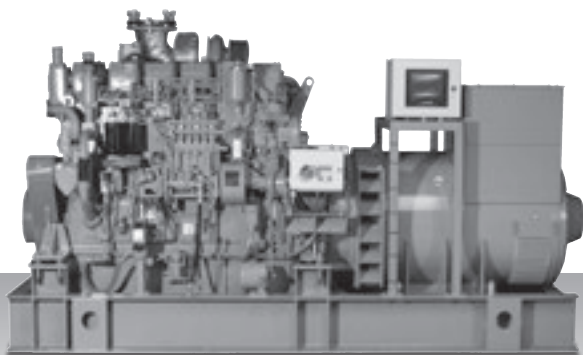
Product Dimensions & Dry Weight

L (mm) : 3,600
W (mm) : 1,615
H (mm) : 1,900
Dry Weight (kg) : 5,900

Dimensions and Weight are based on standard configuration.

Generator Set -
IMO Tier II / EU-3A

MAS 760-S



Engine Model S6R2-T2MPTK

Commercial Rating

	kVA	kWe	RPM	Hz	Emission
Diesel-Electric Propulsion	765	612	1,500	50	IMO-T2
	594	476	1,200	60	IMO-T2
Auxiliary Generator	765	612	1,500	50	IMO-T2
	594	476	1,200	60	IMO-T2

Specifications/ data subject to change without prior notice.

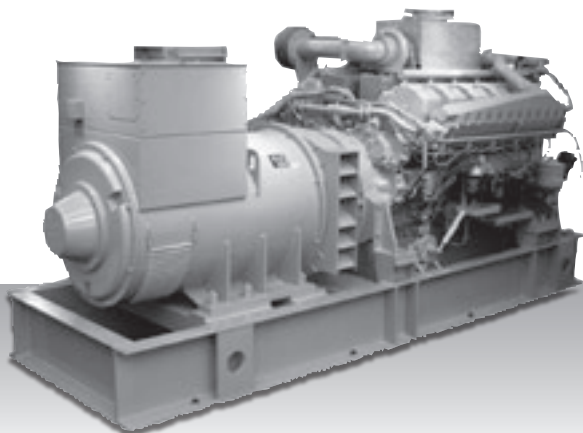
Product Dimensions & Dry Weight

L (mm) : 3,600
W (mm) : 1,615
H (mm) : 1,931
Dry Weight (kg) : 6,030

Dimensions and Weight are based on standard configuration.

Generator Set -
IMO Tier II / EU-3A

MAS 850-S



Engine Model S12A2-MPTAW

Commercial Rating

	kVA	kWe	RPM	Hz	Emission
Diesel-Electric Propulsion	847	678	1,500	50	IMO-T2
	898	718	1,800	60	IMO-T2
Auxiliary Generator	847	678	1,500	50	IMO-T2
	988	790	1,800	60	IMO-T2

Specifications/ data subject to change without prior notice.

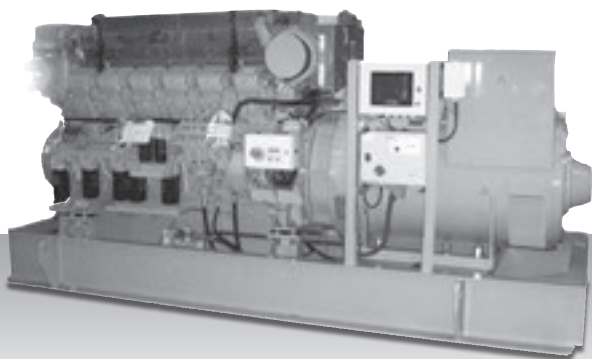
Product Dimensions & Dry Weight

L (mm) : 3,760
W (mm) : 1,818
H (mm) : 1,900
Dry Weight (kg) : 8,000

Dimensions and Weight are based on standard configuration.

Generator Set -
IMO Tier II / EU-3A

MAS 1350-S



Engine Model S12R-MPTAW

Commercial Rating

	kVA	kWe	RPM	Hz	Emission
Diesel-Electric Propulsion	1,351	1,081	1,500	50	IMO-T2
	999	799	1,200	60	IMO-T2
	1,385	1,108	1,800	60	IMO-T2
Auxiliary Generator	1,351	1,081	1,500	50	IMO-T2
	999	799	1,200	60	IMO-T2
	1,529	1,223	1,800	60	IMO-T2

Specifications/ data subject to change without prior notice.

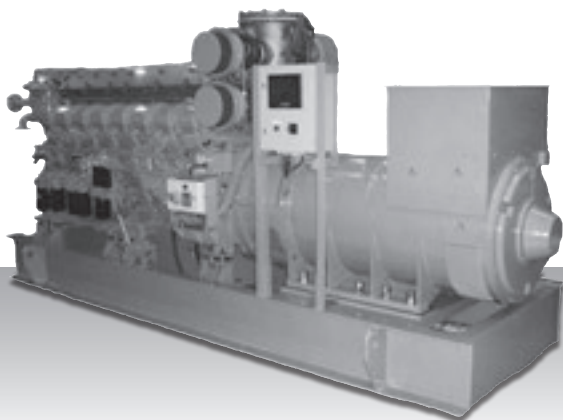
Product Dimensions & Dry Weight

L (mm) : 4,100
W (mm) : 1,725
H (mm) : 2,280
Dry Weight (kg) : 10,000

Dimensions and Weight are based on standard configuration.

Generator Set -
IMO Tier II / EU-3A

MAS 1795-S



Engine Model S16R-MPTAW

Commercial Rating

	kVA	kWe	RPM	Hz	Emission
Diesel-Electric Propulsion	1,796	1,437	1,500	50	IMO-T2
	1,337	1,070	1,200	60	IMO-T2
	1,857	1,485	1,800	60	IMO-T2
Auxiliary Generator	1,796	1,437	1,500	50	IMO-T2
	1,337	1,070	1,200	60	IMO-T2
	2,041	1,633	1,800	60	IMO-T2

Specifications/ data subject to change without prior notice.

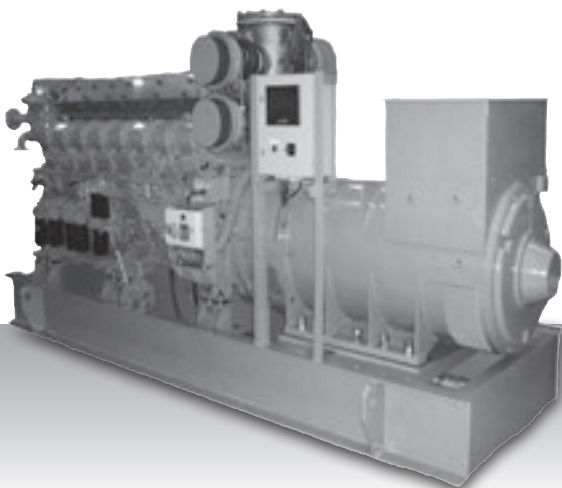
Product Dimensions & Dry Weight

L (mm) : 4,880
W (mm) : 1,725
H (mm) : 2,280
Dry Weight (kg) : 14,000

Dimensions and Weight are based on standard configuration.

Generator Set -
IMO Tier II / EU-3A

MAS 2350-S



Engine Model S16R2-T2MPTAW

Commercial Rating

	kVA	kWe	RPM	Hz	Emission
Diesel-Electric Propulsion	2,358	1,886	1,500	50	IMO-T2
	1,881	1,505	1,200	60	IMO-T2
Auxiliary Generator	2,358	1,886	1,500	50	IMO-T2
	1,881	1,505	1,200	60	IMO-T2

Specifications/ data subject to change without prior notice.

Product Dimensions & Dry Weight

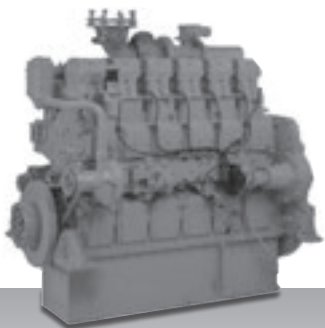
L (mm) : 4,950
W (mm) : 1,750
H (mm) : 2,400
Dry Weight (kg) : 18,000

Dimensions and Weight are based on standard configuration.



Gas-Electric Propulsion Specifications

GS6R-MPTK



6-cylinder, 4-cycle, Water cooled, Ultra Lean Burn and Pre-Chamber type gas engine (Miller cycle), Turbocharged with Air-cooler.

Bore x Stroke (mm) : 170 x 180

Displacement (L) : 24.51

Commercial Rating

kW	BHP	RPM	Hz	Test Cycle
368	422	1,500	50	E2
315	494	1,200	60	E2

Specifications/data subject to change without prior notice.

Product Dimensions & Dry Weight

L (mm) : 1,797

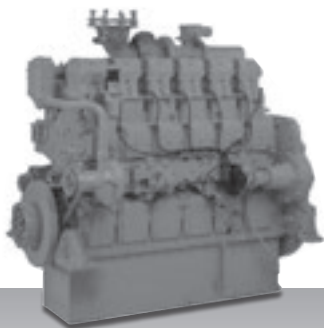
W (mm) : 1,088

H (mm) : 1,638

Dry Weight (kg) : 2,400

Dimensions and Weight are based on standard configuration.

GS6R2-MPTK



6-cylinder, 4-cycle, Water cooled, Ultra Lean Burn and Pre-Chamber type gas engine (Miller cycle), Turbocharged with Air-cooler.

Bore x Stroke (mm) : 170 x 220

Displacement (L) : 29.96

Commercial Rating

kW	BHP	RPM	Hz	Test Cycle
on request	on request	1,500	50	E2
394	528	1,200	60	E2

Specifications/data subject to change without prior notice.

Product Dimensions & Dry Weight

L (mm) : 1,864

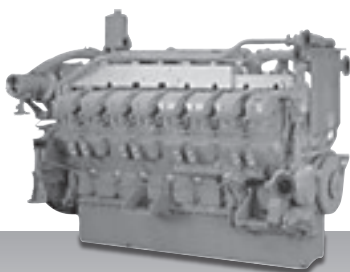
W (mm) : 1,063

H (mm) : 1,718

Dry Weight (kg) : 2,650

Dimensions and Weight are based on standard configuration.

GS12R-MPTK



12-cylinder, 4-cycle, Water cooled, Ultra Lean Burn and Pre-Chamber type gas engine (Miller cycle), Turbocharged with Air-cooler.

Bore x Stroke (mm) : 170 x 180

Displacement (L) : 49.03

Commercial Rating

kW	BHP	RPM	Hz	Test Cycle
722	968	1,500	50	E2
632	848	1,200	60	E2

Specifications/data subject to change without prior notice.

Product Dimensions & Dry Weight

L (mm) : 2,371

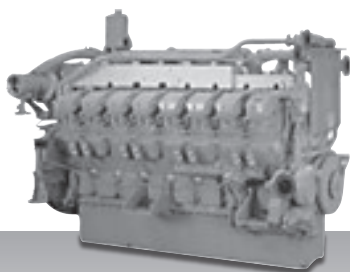
W (mm) : 1,820

H (mm) : 2,137

Dry Weight (kg) : 5,375

Dimensions and Weight are based on standard configuration.

GS16R-MPTK



16-cylinder, 4-cycle, Water cooled, Ultra Lean Burn and Pre-Chamber type gas engine (Miller cycle), Turbocharged with Air-cooler.

Bore x Stroke (mm) : 170 x 180

Displacement (L) : 65.37

Commercial Rating

kW	BHP	RPM	Hz	Test Cycle
959	1,286	1,500	50	E2
845	1,133	1,200	60	E2

Specifications/data subject to change without prior notice.

Product Dimensions & Dry Weight

L (mm) : 2,841

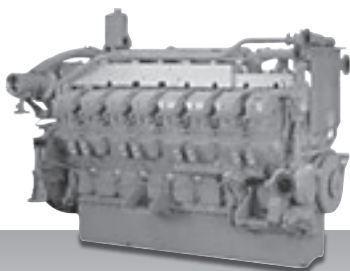
W (mm) : 1,820

H (mm) : 2,137

Dry Weight (kg) : 6,800

Dimensions and Weight are based on standard configuration.

GS16R2-MPTK



16-cylinder, 4-cycle, Water cooled, Ultra Lean Burn and Pre-Chamber type gas engine (Miller cycle), Turbocharged with Air-cooler.

Bore x Stroke (mm) : 170 x 220
Displacement (L) : 79.90

Commercial Rating

kW	BHP	RPM	Hz	Test Cycle
1,563	2,096	1,500	50	E2
1,250	1,676	1,200	60	E2

Specifications/data subject to change without prior notice.

Product Dimensions & Dry Weight

L (mm) : 3,423
W (mm) : 2,164
H (mm) : 2,122
Dry Weight (kg) : 8,105

Dimensions and Weight are based on standard configuration.

International Offices

WORLDWIDE

Headquarters

Mitsubishi Heavy Industries, Ltd.

16-5 Konan 2-chome, Minato-ku, Tokyo, Japan

Tel: +81-3-6716-3111

Fax: +81-3-6716-5800

www.mhi.co.jp/en

Asia-Pacific

Singapore

MHI Engine System Asia Pte. Ltd.

No.2, Tuas Avenue 20, Singapore 638818 Republic of Singapore

Tel: +65-6862-2202

Fax: +65-6862-5728

<http://www.mhiesa.com.sg>

China

MHI Engine System Hong Kong Ltd.

Suite 1121A, 11/F., Ocean Centre, Harbour City, Tsim Sha Tsui, Kowloon, Hong Kong, China

Tel: +852-2375-1816

Fax: +852-2376-3326

MHI Engine System (Shenzhen) Co., Ltd.

Room No. 208, 2/F., Excellence Logistics Centre Building, No. 18 Shihua Road, Futian Free Trade Zone, Shenzhen, Guangdong, China

Tel: +86-755-3320-3030

Fax: +86-755-3320-5995

Indonesia

PT. MHI Engine System Indonesia

#302 Bld. Cilandak Commercial Estate P.O. Box 7510 CCE, Cilandak, Jakarta, Indonesia

Tel: +62-21-7890191

Fax: +62-21-7890278

Philippines

MHI Engine System Philippines, Inc.

24 Warehouse 4C Sunblest Compound KM 23, West service road B0. Cupang, Muntinlupa, Metro Manila, Philippines

Tel: +63-2-775-0209

Fax: +63-2-775-0310

Vietnam

MHI Engine System Vietnam Co., Ltd.

39 Dai Lo Huu Nghi, Vietnam Singapore Industrial Park Thuan An District,
Binh Duong Province Socialist Republic of Vietnam

Tel: +63-2-775-0209

Fax: +63-2-775-0310

Americas

U.S.A.

Mitsubishi Engine North America, Inc.

Two Pierce Place, 11th Floor, Itasca, IL 60143 U.S.A.

Tel: +1-630-268-0750

Fax: +1-630-268-9293

www.mitsubishi-engine.com

Brazil

MHI Sul Americana Distribuidora de Motores Ltda.

Avenida Doutor Altino Arantes, 331 Vila Clementino Cep 04042-032,
Sao Paulo, SP, Brazil

Tel: +55-11-3515-7890

Fax: +55-11-3515-7899

Europe, Russia, Middle East and Africa

Headquarters

Mitsubishi Turbocharger and Engine Europe B.V.

Damsluisweg 2, 1332 EC, Almere, The Netherlands

Tel: +31-36-538-8311

Fax: +31-36-538-8200

Email: info@mtee.eu

www.mtee.eu

DISTRIBUTORS AND DEALERS OF MARINE ENGINES

**Albania, Bosnia and Herzegovina,
Croatia, Kosovo, Macedonia,
Montenegro, Serbia, Slovenia**
EXTREME d.o.o.
www.extreme-slo.com

Austria, Germany, Switzerland
ScanDiesel GmbH
www.scandiesel.de

Belarus
Motors & Transmission
www.mit.by

**Belgium, Luxemburg,
Netherlands**
Koedood Dieselservice B.V.
www.koedood.nl

Machinefabriek G. Olthof N.V.
www.olthof.eu

**Machinefabriek Padmos
Stellendam B.V.**
www.padmos.nl

Denmark, Greenland
West Diesel A.S.
www.westdiesel.dk

Estonia, Latvia, Lithuania
SIA VARMAA
www.varmaa.lv

France
MIDIF
www.midif.fr

Greece
A.EI.M.A. SA
www.aeima.gr

Iceland
MD Vélar Ltd.
www.mdvelar.is

Iran
SANA FARASTAN Co., Ltd.
www.sanafarastan.com

Ireland
Diamond Diesels UK Ltd
www.diamonddiesels.co.uk

Padmos Ireland
www.padmos.nl

Italy
Cerdiesel S.p.A.
www.cerdiesel.com

Compagnia Tecnica Motori S.p.A.
www.ctm.it

Lesotho, South Africa, Swaziland
Power O2
www.powero2.co.za

Morocco
Midima
www.midima.ma

Norway
Gas & Diesel Power AS
www.dieselpower.no

Oman
OHI Marine
www.ohigroup.com

Poland
BTH FAST
www.bthfast.eu

Portugal
Progener
www.progener.es

Romania
SC Watermota Srl
www.watermota.ro

Russia
"M-MOTORS" LLC
www.mitsubishi-engine.ru

Perpetuum Mobile
www.p-mobile.ru

Synergetika
www.synergetika.ru

United Kingdom
Diamond Diesels UK Ltd
www.diamonddiesels.co.uk

Spain
ITXASTEK SAL
unai@itxastek.com

Progener
www.progener.es

Solé S.A.
www.solediesel.com

Sweden
Power House AB
www.powerholding.se

Turkey
Enka Marketing Export Import Inc.
www.enka.com.tr

PARTNERS IN MARINE ENGINES AND GENERATOR SETS

10 to 100 kW
Solé S.A.
www.solediesel.com

100 to 250 kW
SCAM MARINE
www.scam-marine.hr

VETUS B.V.
www.vetus.com

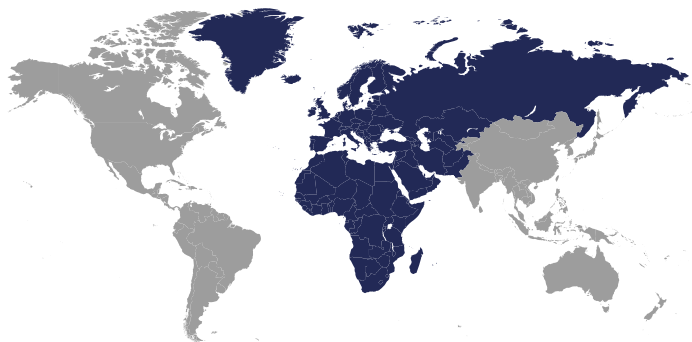
For more information on Marine Engines and Generator Sets specifications please contact your local distributor or Mitsubishi Turbocharger and Engine Europe B.V.

Disclaimer

Mitsubishi Turbocharger and Engine Europe B.V. reserves the right to modify any characteristic or specification without prior notice and without incurring any obligation. The illustrations may include optional equipment and/or accessories. All information in this brochure is based on the latest information available at the time of printing. Unless mentioned otherwise, the information mentioned is owned by Mitsubishi Turbocharger and Engine Europe B.V. Text, lay-out, illustrations, scripts, articles and other items in this product guide are protected by copyright.

Your loyal, reliable partner since 1917

In 1917, Mitsubishi Heavy Industries (MHI) became the first Japanese company to develop and build a diesel engine, and since then has steadfastly pioneered technologies for the reciprocating engine. MHI offers a broad line-up, ranging from construction machinery and marine engines to engines for power generation. In recent years, the company has been involved in the general development of advanced gas turbines, rocket engines, and other types of internal combustion engines, even as it continues to look at the true significance and its decades-long quest to further refine the reciprocating engine.



MITSUBISHI TURBOCHARGER AND ENGINE EUROPE B.V.

Headquarters Engine, Generator set & Powerplant Division Europe, Middle East and Africa

Damsluisweg 2
1332 EC Almere
P.O. Box 30101
1303 AC Almere
The Netherlands

Phone +31-36-538-8311

info@mtee.eu
www.mtee.eu